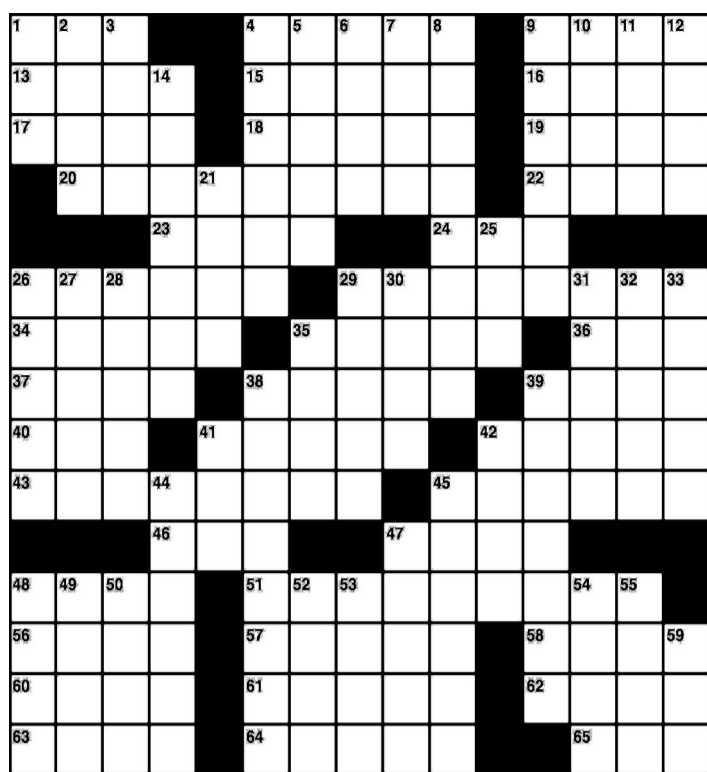


THE DAILY COMMUTER PUZZLE

By Jacqueline E. Mathews

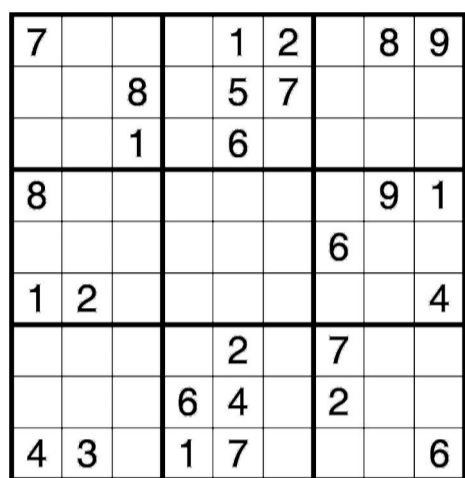


- ACROSS**
 1 Crash into
 4 Skin lotion ingredients
 9 Bang shut
 13 Grew gray
 15 Rip hider
 16 Largest Caribbean island
 17 Diminish
 18 TV's "Orange _ New Black"
 19 U-_; rental truck
 20 Reagan, to Carter
 22 Stringed instrument
 23 Nuts
 24 Feel remorse about
 26 One of many on a zebra
 29 Captains of small boats
 34 Small appliances
 35 Some Scandinavians
 36 In a _; bored by routine
 37 _ away; disappear gradually
 38 Hemingway's "The Sun Also _"
 39 Bull: Sp.
 40 Even score
 41 Sign of life
 42 Actor Romero
 43 Disheveled
 45 Exclusively
 46 " _ a Mad, Mad, Mad, Mad World"
 47 Pass out cards
 48 _-ran; loser
 51 Dreadful
 56 Not counterfeit
 57 Forgo voluntarily
 58 Basis for financial aid
 60 Epiphany visitors
 61 Playful prank
 62 Boarding pass info, often
 63 Wingtip-to-wingtip distance

SUDOKU

By The Mephram Group

Complete the grid so each row, column and 3-by-3 box (in bold borders) contains every digit, 1 to 9. For strategies on how to solve Sudoku, visit sudoku.org.uk.



For answers to the crossword and Sudoku puzzles, see page A6.

- 64 Bread ingredient
 65 Actor Romano

DOWN

- 1 Red and chafed
 2 Turkish chief titles
 3 Waiter's offering
 4 Per person

- 5 Cowboy's rope
 6 Baseball's Mel & his kin
 7 Audio engineer's concern
 8 Cooking wines
 9 Carry; haul
 10 Lanai banquet
 11 Lie next to
 12 One with a

- beard
 14 Turn down
 21 Law enforcers
 25 Follow-_; 2nd doctor's appts., often
 26 Uses a strainer
 27 Mountain road
 28 Roper's event
 29 Disrespectful
 30 Part of the leg
 31 Uneven
 32 Part of RFD
 33 "West Side _"
 35 Pickle variety
 38 Flies the coop
 39 Meaningful
 41 Teacher's favorite
 42 " _ Miner's Daughter"; Spacek film
 44 Fiddle
 45 Pick
 47 Bette or Ossie
 48 Weapons
 49 "Look before you _"
 50 Long tale
 52 Transparent rectangle
 53 Gyro bread
 54 Just around the corner
 55 " _ grip!"; cry to the hysterical
 59 Actress Susan

Tribune Media Services

Crab Cooker to retain its iconic sign

BY HILLARY DAVIS

You will still be able to "look up here." The Crab Cooker restaurant, a family-owned Newport Beach institution, received unanimous approval from the city Planning Commission Thursday to retain the iconic, fish-shaped sign that has beckoned customers to its dining room at Newport Boulevard and 22nd Street for decades.

"Don't look up here," the neon red halibut irreverently declares.

But for generations, diners have done just that as they crossed under the sign to eat Dungeness crab cakes and other fruits of the sea off paper plates in the landmark eatery — except during the last year and a half. The restaurant has been under reconstruction during that time after foundation damage related to construction of the condominiums next door.

Tearing down and rebuilding on the same spot made more economic sense to the Crab Cooker's owners than renovations, so in September 2018 the building came down after serving as the restaurant's home for 67 years.

Now, with construction nearing its end, it's time for some detail work, like seeking an exception for the whimsical sign that would otherwise be out of code. The restaurant has other, more conventional identifiers facing 22nd and Newport Boulevard, and the fish would have exceeded the generally allowed total amount of signage.

A fish out of scale, as it were. But the city had a way to grandfather in the fish — declare it a "heritage sign" for its historical and visual significance.

The commission readily agreed. "I thought this application was a little fishy," commission chair Peter Koetting said, "but I won't be crabby about it."



Photo by Hillary Davis

THIS PHOTO of a rendering of the Crab Cooker in Newport Beach will look much like its predecessor (inset) upon its expected reopening in summer 2020.

The commission also permitted the restaurant to retain its green, old-world-style street clock and matching exterior benches overhanging the sidewalk.

The replacement building, on track for opening this summer, will be roughly the same size as its predecessor and have a similar layout, with an airy, semi-enclosed patio, larger restrooms and a second floor for storage. In addition to the fish sign, the exterior will retain its familiar fire engine-hued walls and green-and-white-striped awnings.

And the menu will be the same. A dozen employees have stayed with the company working at the Crab Cooker's sister restaurant in Tustin, smoking fish and making chowder to the north, said owner Jim Wasko.

"We very much look forward to bringing it back to Newport Beach, our home," he said.

hillary.davis@latimes.com
 Twitter: @dailypilot_hd

LAWSUIT

Continued from page A1

find any engine or mechanical failure.

Vanessa Bryant sued Island Express in February on the same day as the memorial service at Staples Center to celebrate the lives of Kobe and Gianna Bryant.

That wrongful death complaint alleged the company "permitted a flight with full knowledge that the subject helicopter was flying into unsafe weather conditions" and said the company should have installed a terrain alarm system in the helicopter that could have warned Zobayan he was nearing a hillside. Federal



James Anderson | NTSB

ADAM HURAY, right, and Carol Hogan examine wreckage as part of the NTSB's investigation of the Jan. 26 helicopter crash in Calabasas.

regulations don't require the helicopter to have that system.

The lawsuits filed Sunday seek unspecified mon-

etary damages.

NATHAN FENNO is a staff writer with the Los Angeles Times.

Pacific View Memorial Park & Mortuary



NEW DEVELOPMENT PANORAMIC OCEAN VIEW LOTS NOW AVAILABLE

- Complimentary In-Park Tour or Online Virtual Tour • Complimentary Price Quote

Please call now for further information and to receive Your Free "Personal Planning Guide"

3500 Pacific View Drive, Corona Del Mar, CA 92625
 949-644-2700
 FD 1176 COA 507

All of us **THANK YOU!** To all our Essential Workers our world needs you and we appreciate you!

made with love for Mom!

gift certificates available!

FOR MOTHER'S & FATHER'S DAY

FIGGE PHOTOGRAPHY
 WWW.FIGGESTUDIO.COM
 949.644.6933 // f p in

