

Current Status

Deaths Reported Today	11
Total Deaths	24,525
Cases Reported Today	839
Total Cases	1,254,354
Currently Hospitalized	296
Total People Tested	7,083,908
Daily test positivity rate	2.5%
7-day daily average case rate*	3.47 cases/100,000

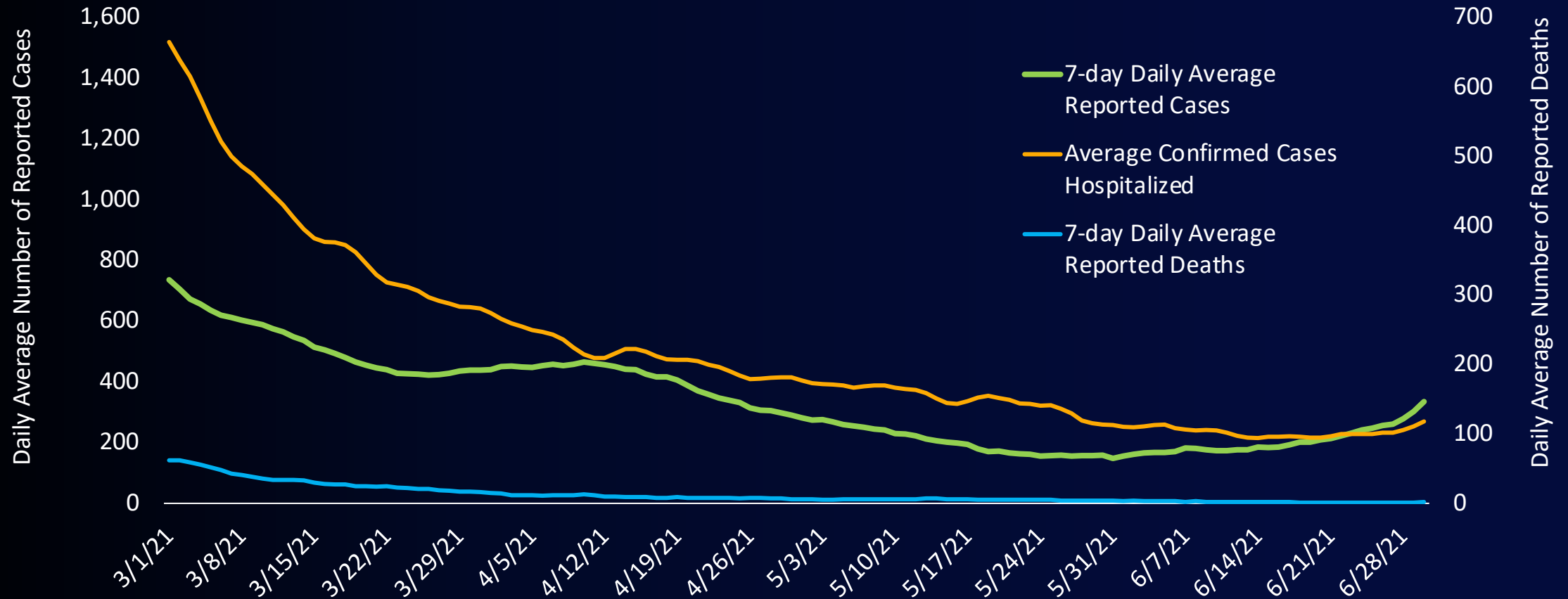
*As of 06/30/2021



covid19.lacounty.gov

7/8/2021

Number of COVID-19 Cases and Hospitalizations by Episode Date and Deaths by Date of Death March 1 – June 30, 2021

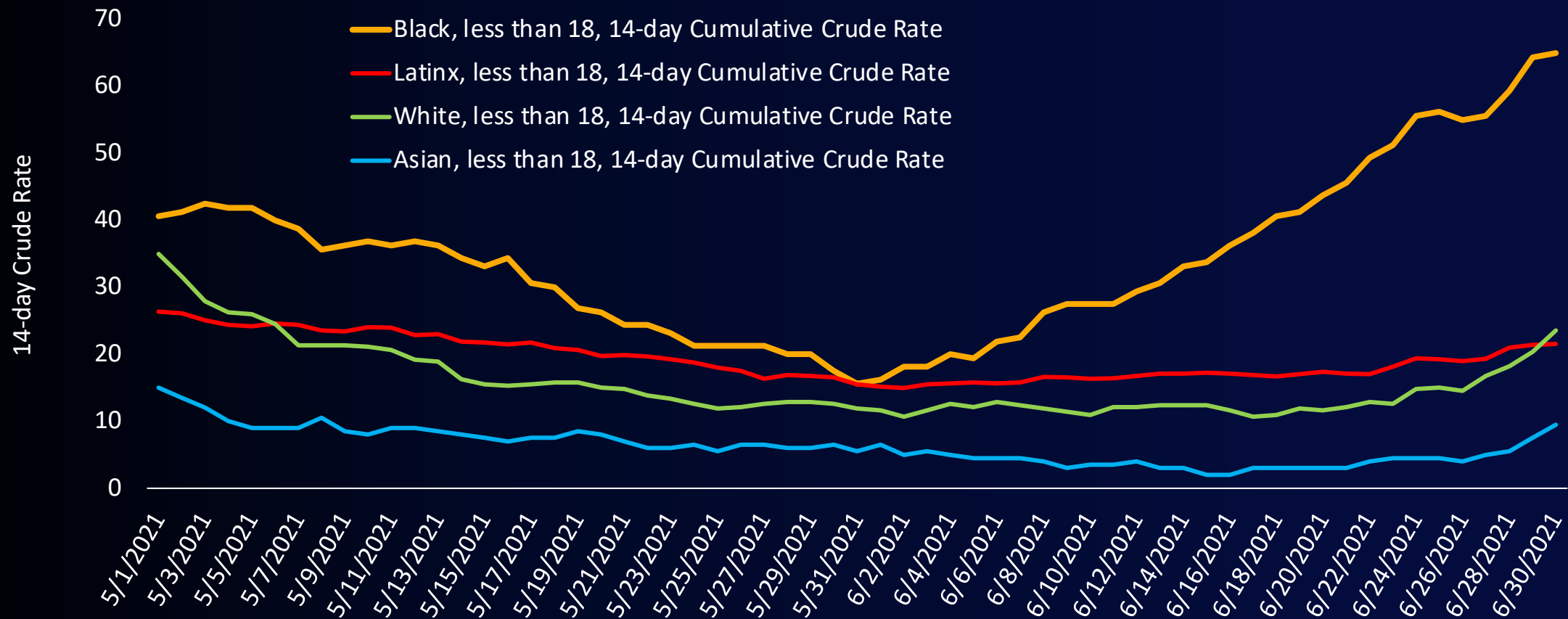


Age-Adjusted Case, Hospitalization, and Death Rates per 100,000 People by Race and Ethnicity Over Two-Week Periods ending May 29 and June 26, 2021

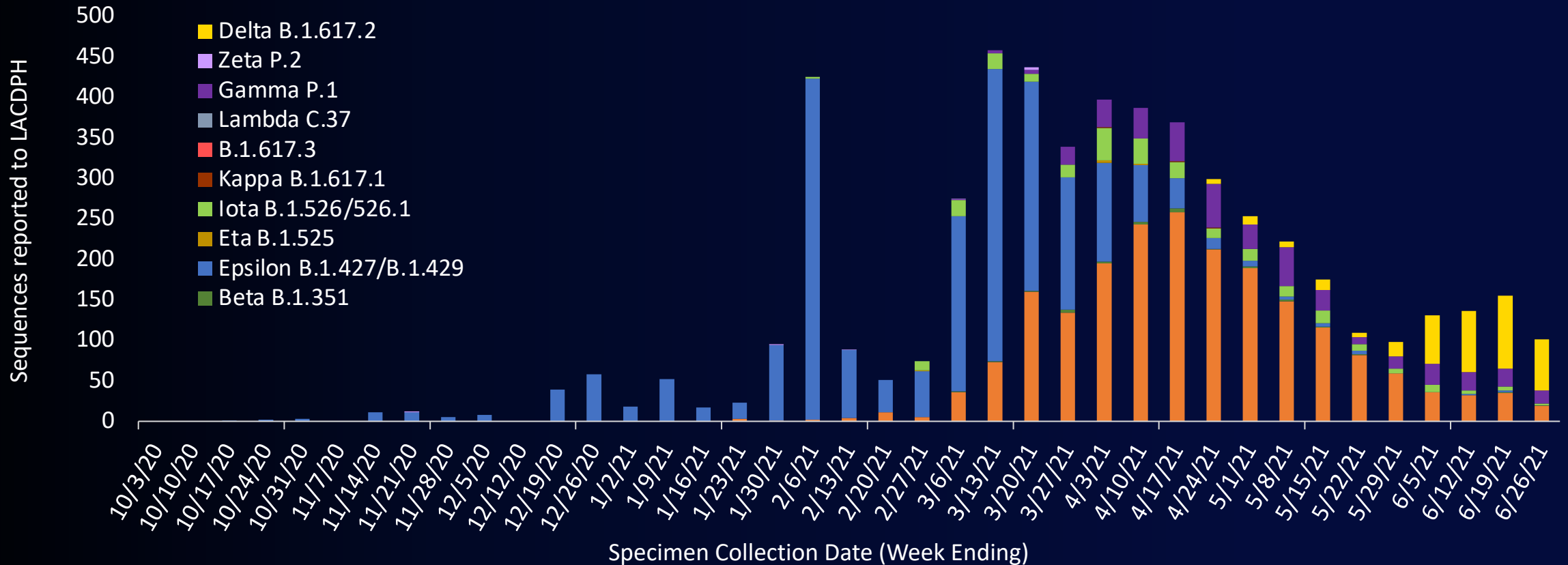
Race/Ethnicity	Case Incidence Rate		Hospitalization Rate		Death Rate	
	May 29	June 26	May 29	June 26	May 29	June 26
Black	38	↑ 65	8.9	↑ 9.3	1.0	↓ 0.1
Latinx	21	↑ 26	6.6	↓ 5.4	0.9	↓ 0.2
White	16	↑ 22	3.9	↓ 2.7	0.4	↓ 0.1
Asian	6	↑ 10	1.5	↑ 1.7	0.2	↓ 0.1



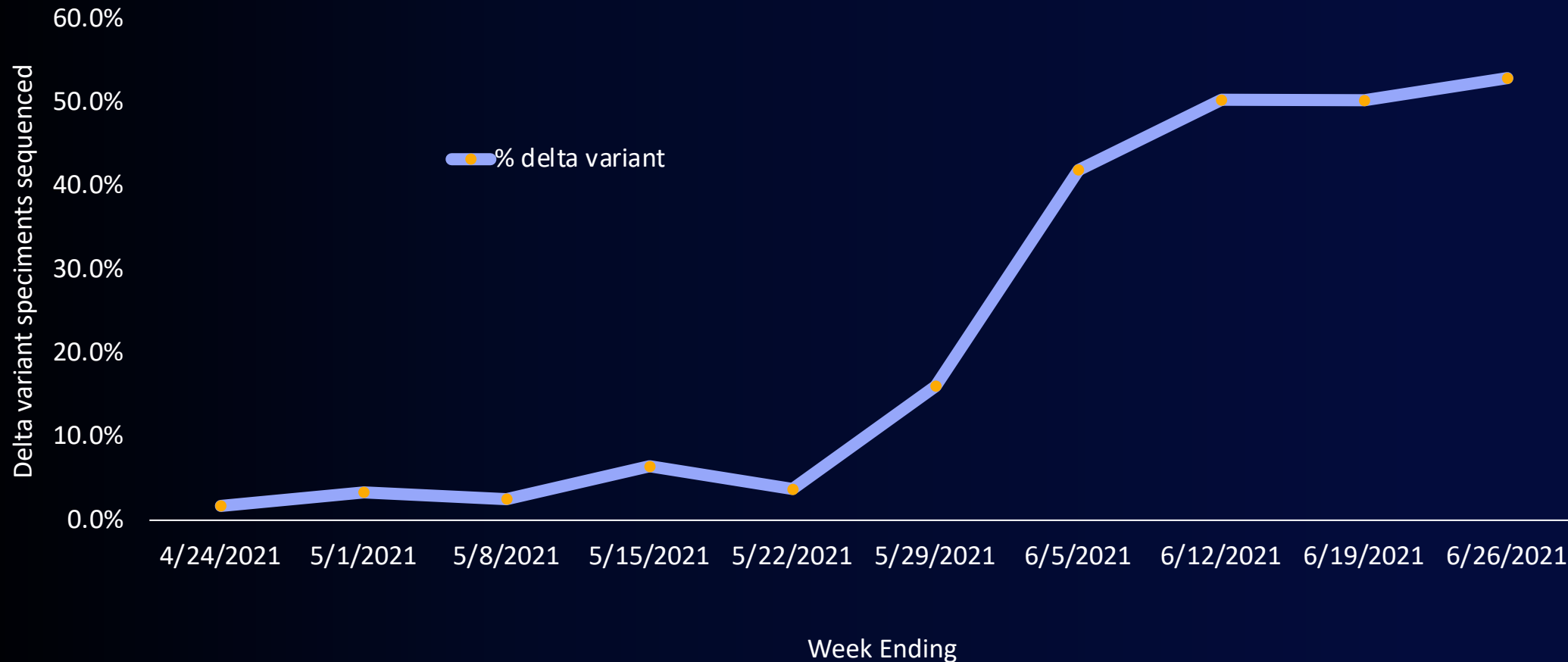
14-day Cumulative Crude Rate per 100,000 by Race/Ethnicity Children (<18 years old), May 1 – June 30, 2021



LAC Cases Caused by Variants of Concern by Specimen Collection Date Identified by PHL and Other California Laboratories



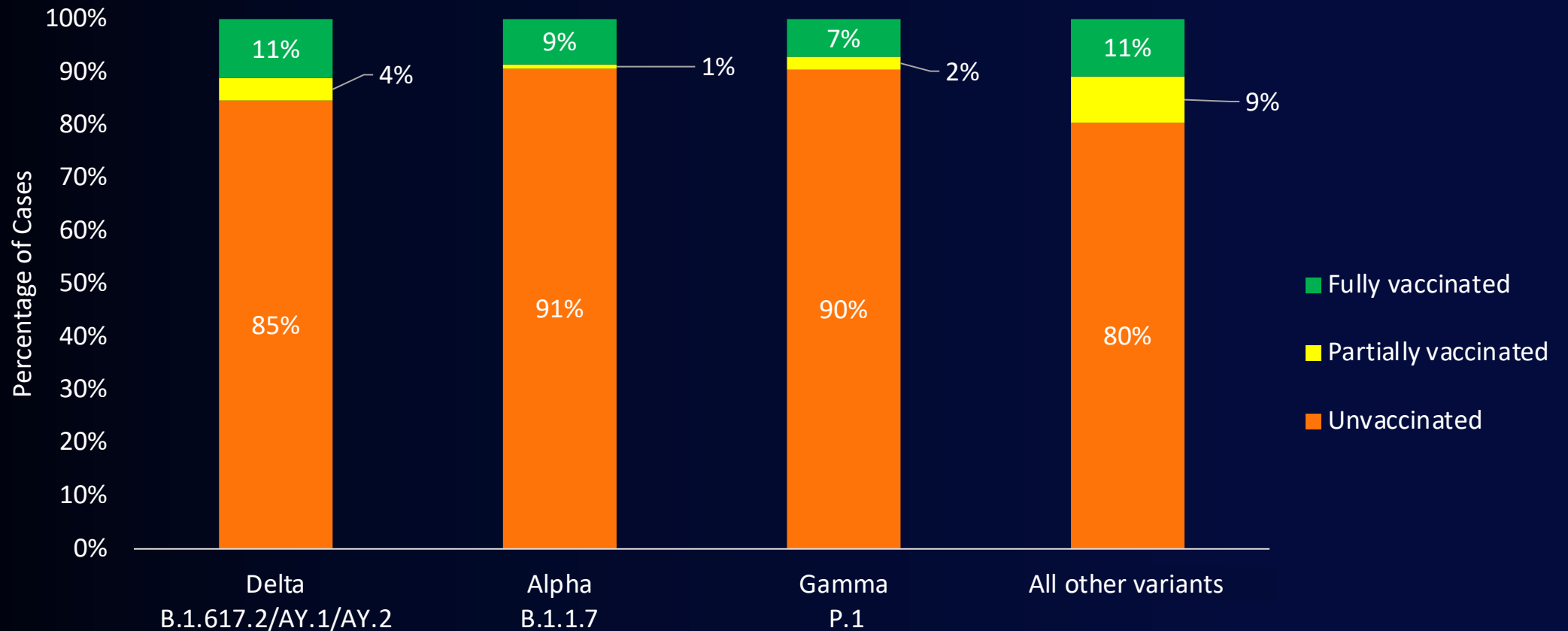
Percentage of Sequenced Specimens That Were Delta Variant by Week of Sequenced Specimen Collection Date, LAC



covid19.lacounty.gov

7/8/2021

Post-Vaccination Infections Among LAC Cases Tested for Variants Among Specimens Collected June 2021



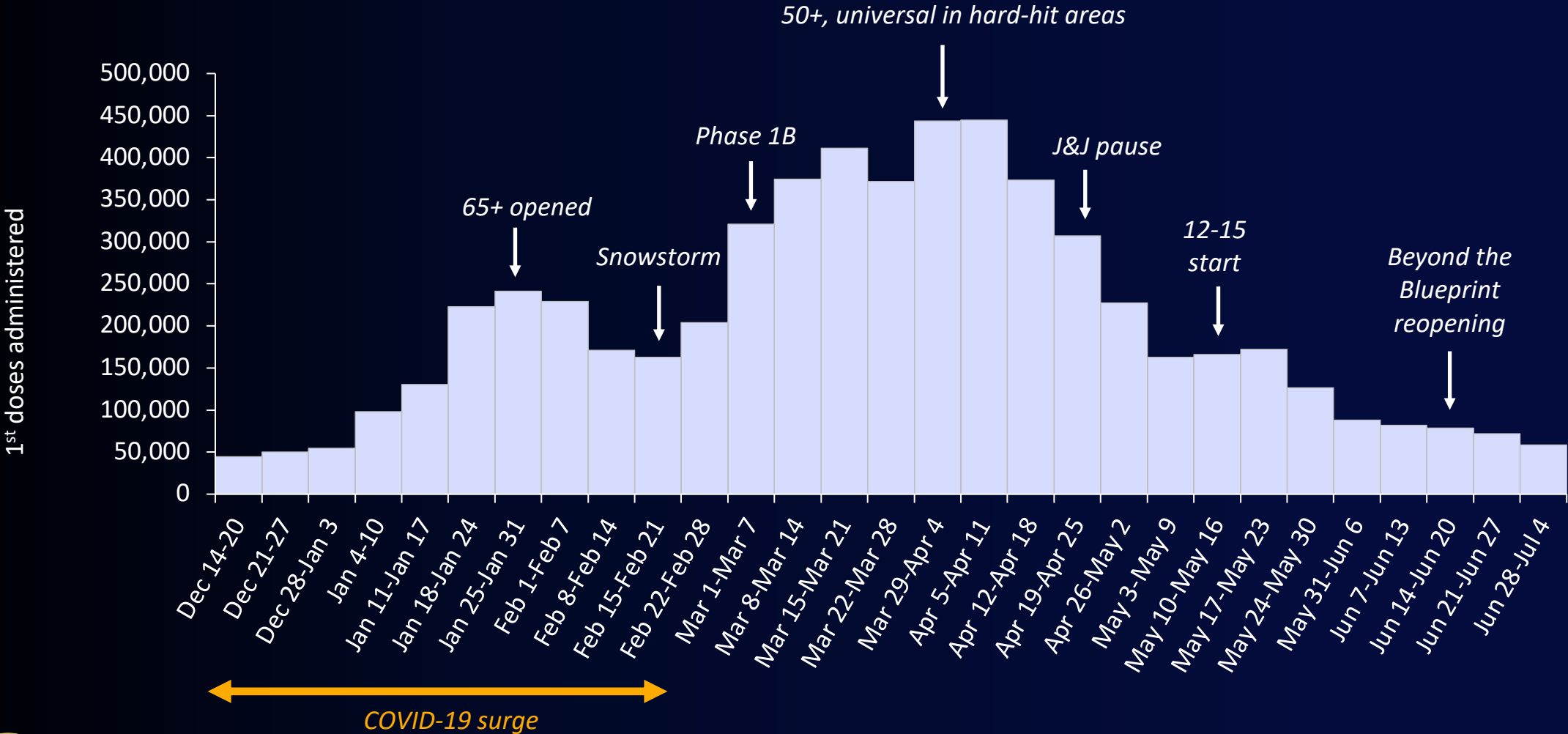
COVID-19 Vaccine Update

As of July 4th, 2021

Total Doses Administered	10,580,529
First Doses	5,889,505
Second Doses	4,691,024
LAC Residents with ≥ 1 Dose	5,726,276
LAC Residents Fully Vaccinated	4,999,859



First Doses Administered Weekly Among All Eligible Persons



covid19.lacounty.gov

7/8/2021

Cumulative Percent of Population Who Have Received at Least 1 Dose of Vaccine, by Week and Age Group

Age Group	June 4, 2021	July 4, 2021	Relative % Increase
12-15	28%	39%	39%
16-17	48%	54%	14%
18-29	53%	57%	8%
30-49	62%	65%	6%
50-64	71%	73%	4%
65-79	90%	91%	2%
80+	76%	77%	1%



Cumulative Percent of Population 16 and Older Who Have Received at Least 1 Dose of Vaccine, by Race/Ethnicity

Race/Ethnicity	June 4, 2021	July 4, 2021	Relative % Increase
Black/African American	42%	45%	5.7%
Latinx	51%	54%	5.8%
American Indian/Alaska Native*	59%	62%	6.0%
White	64%	65%	2.7%
Asian	73%	76%	3.3%
NHOPI**	114%	118%	3.9%

*Likely an overestimate due to inclusion of multiracial people

**NHOPI estimates not reliable due to high likelihood of inaccuracies



Who Isn't Getting Vaccinated?



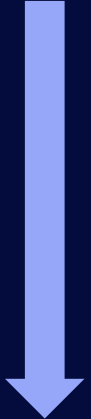
Percent of LA County Residents With At Least 1 Dose of Vaccine as of June 27, 2021

	12-15	16-17	18-29	30-49	50-64	65-79	80+
Black/African American	19	27	28	39	52	69	61
Latinx	27	42	43	51	66	81	61
American Indian/Alaska Native*	40	52	59	66	57	68	65
White	45	58	58	63	61	82	72
Asian	69	81	76	73	74	85	68

*Likely an overestimate due to inclusion of multiracial people



Two-Week Age-Adjusted Case Incidence, Hospitalization, and Death Rates per 100,000 People and Cumulative Percent Vaccinated by Race/Ethnicity June 13 - June 26, 2021

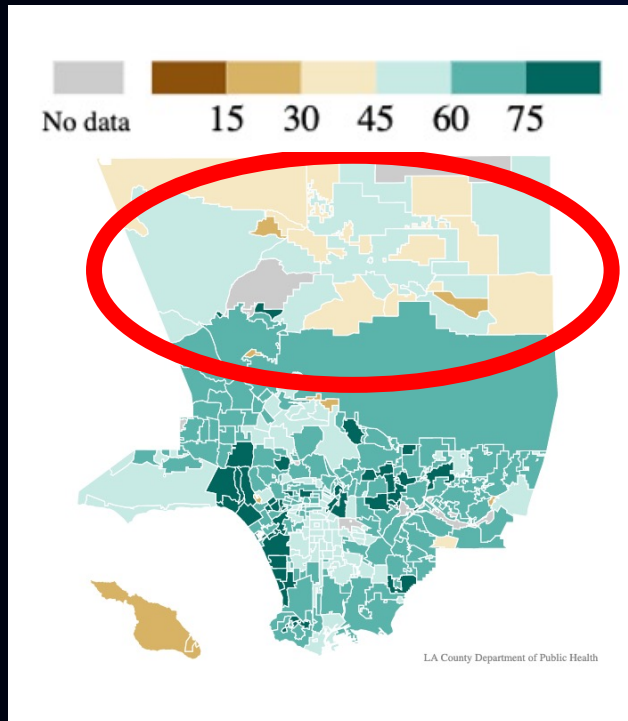
Race/Ethnicity	Case Incidence Rate	Hospitalization Rate	Death Rate	% With ≥ 1 Vaccine*
Black	65 	9.3 	0.1	45% 
Latino	26	5.4	0.2	54%
White	22	2.7	0.1	65%
Asian	10	1.7	0.1	75%

*As of 6/26/21

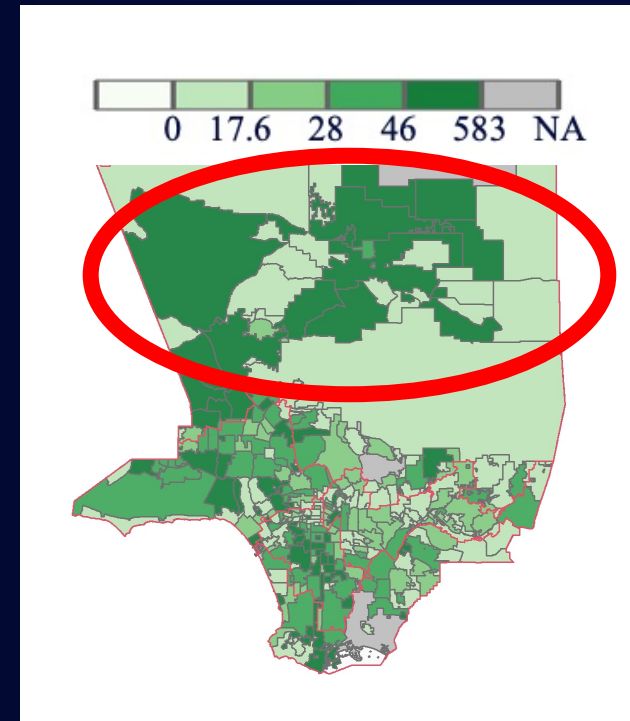


Vaccination and Case Rates by Community

% Vaccinated
as of **June 16**



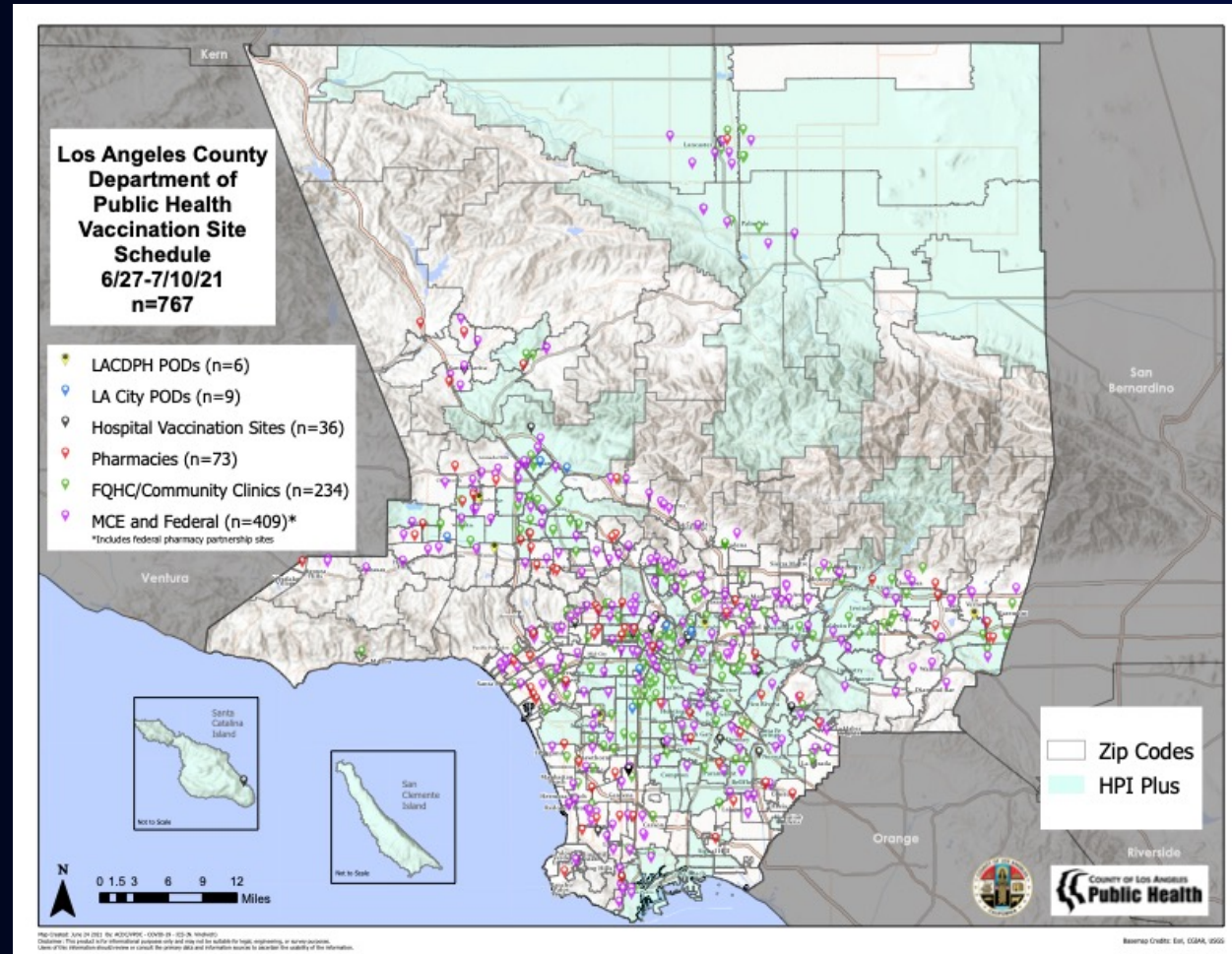
14d cumulative cases/100K
as of **June 26**



covid19.lacounty.gov

7/8/2021

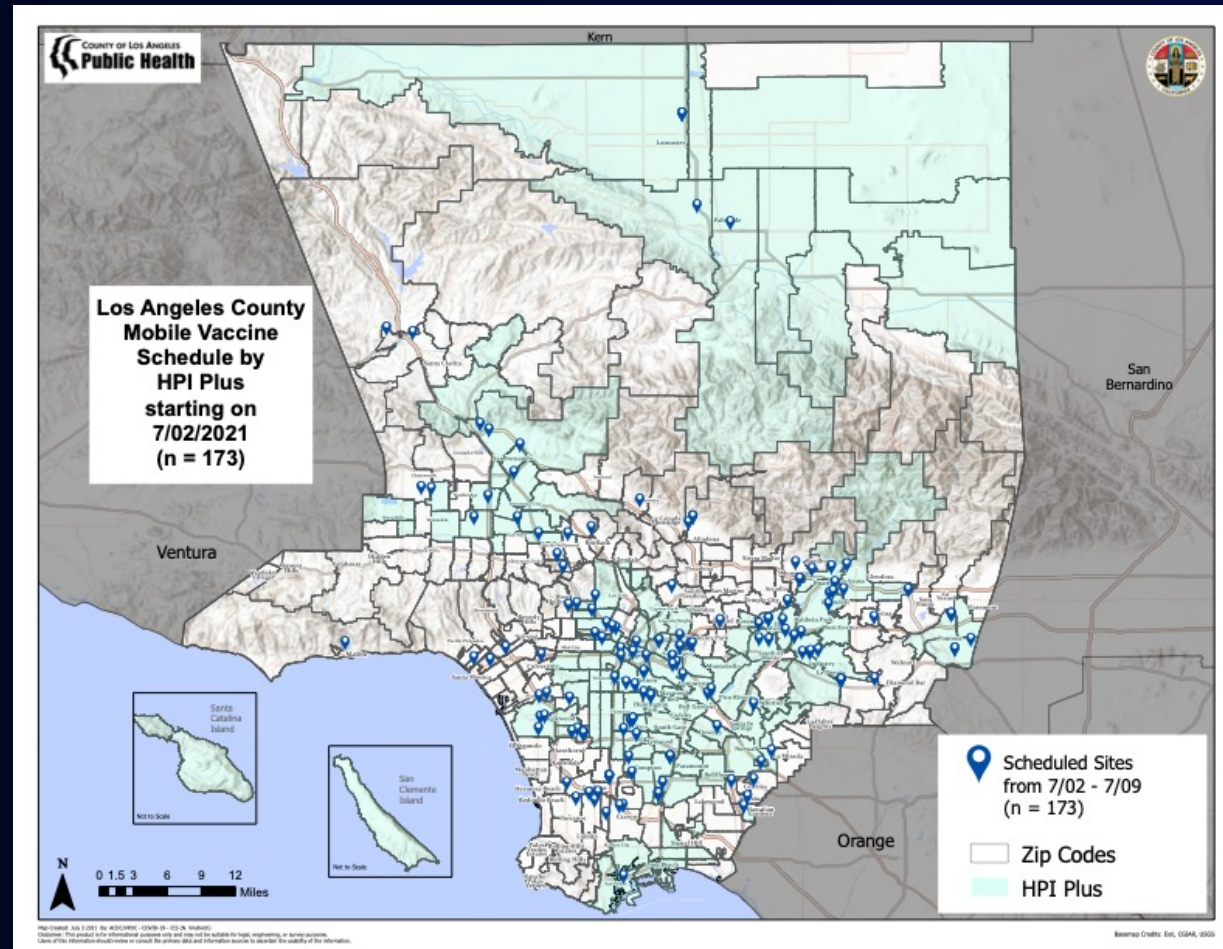
Vaccination Sites in LA County



covid19.lacounty.gov

7/8/2021

Mobile Vaccine Units in LA County



covid19.lacounty.gov

7/8/2021

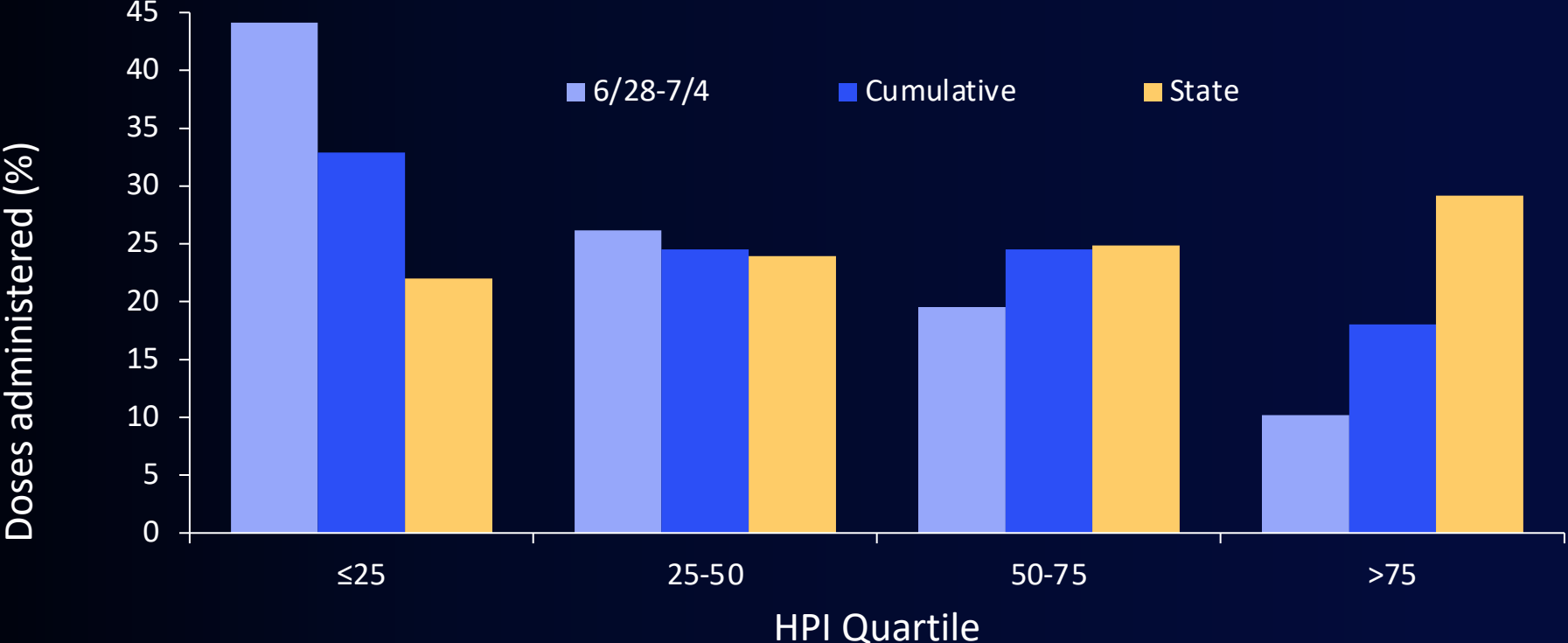
Our Outreach and Educational Efforts



covid19.lacounty.gov

7/8/2021

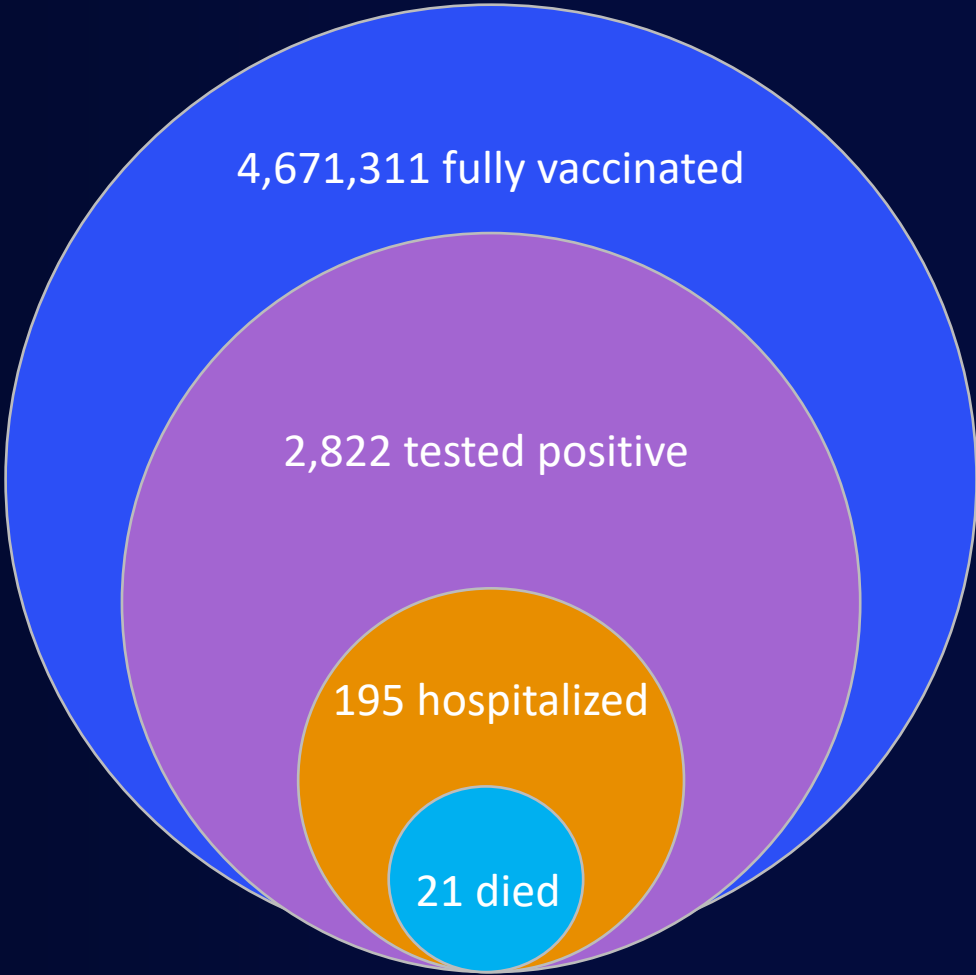
Doses Administered to People Living in Vulnerable Communities



Covid Among Fully Vaccinated People in LAC

Of fully vaccinated people:

- 0.06% tested positive
- 0.004% hospitalized for Covid
- 0.0004% died



To Thank You for Getting Vaccinated



- Enter the sweepstakes to win entrance to one of 7 sets of concert tickets
 - 1st and 2nd-dose recipients
- Enter the sweepstakes by getting your vaccine between this Friday and next Thursday at:
 - LA County sites
 - LA City sites
 - St. John's Well Child and Family Center sites
 - More sites to come
- Go to VaccinateLACounty.com to find a location near you
- **THANK YOU TO THE STAPLES CENTER AND THE HOLLYWOOD BOWL!**



covid19.lacounty.gov

7/8/2021

Worker Rights and Employer Obligations