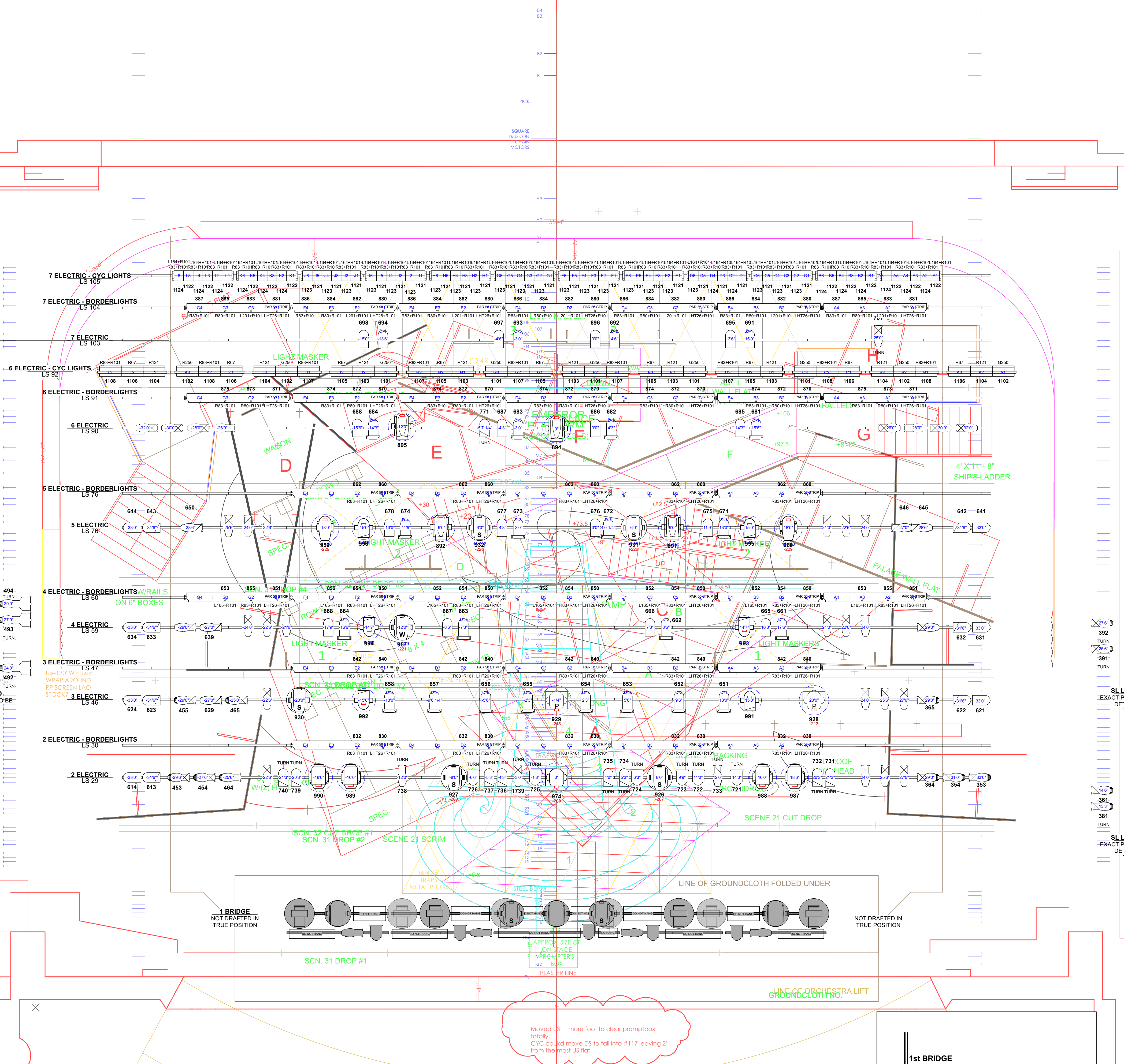
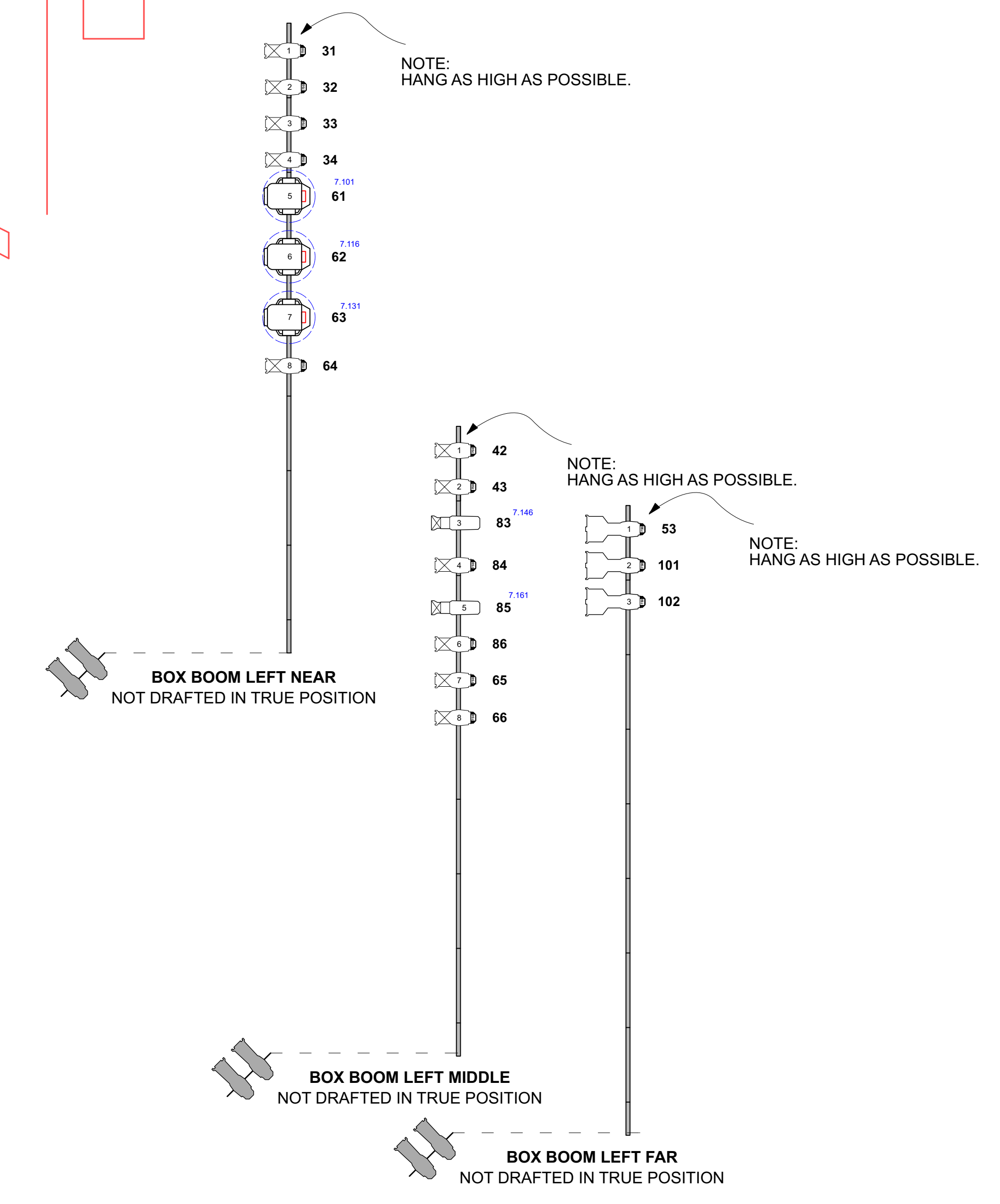
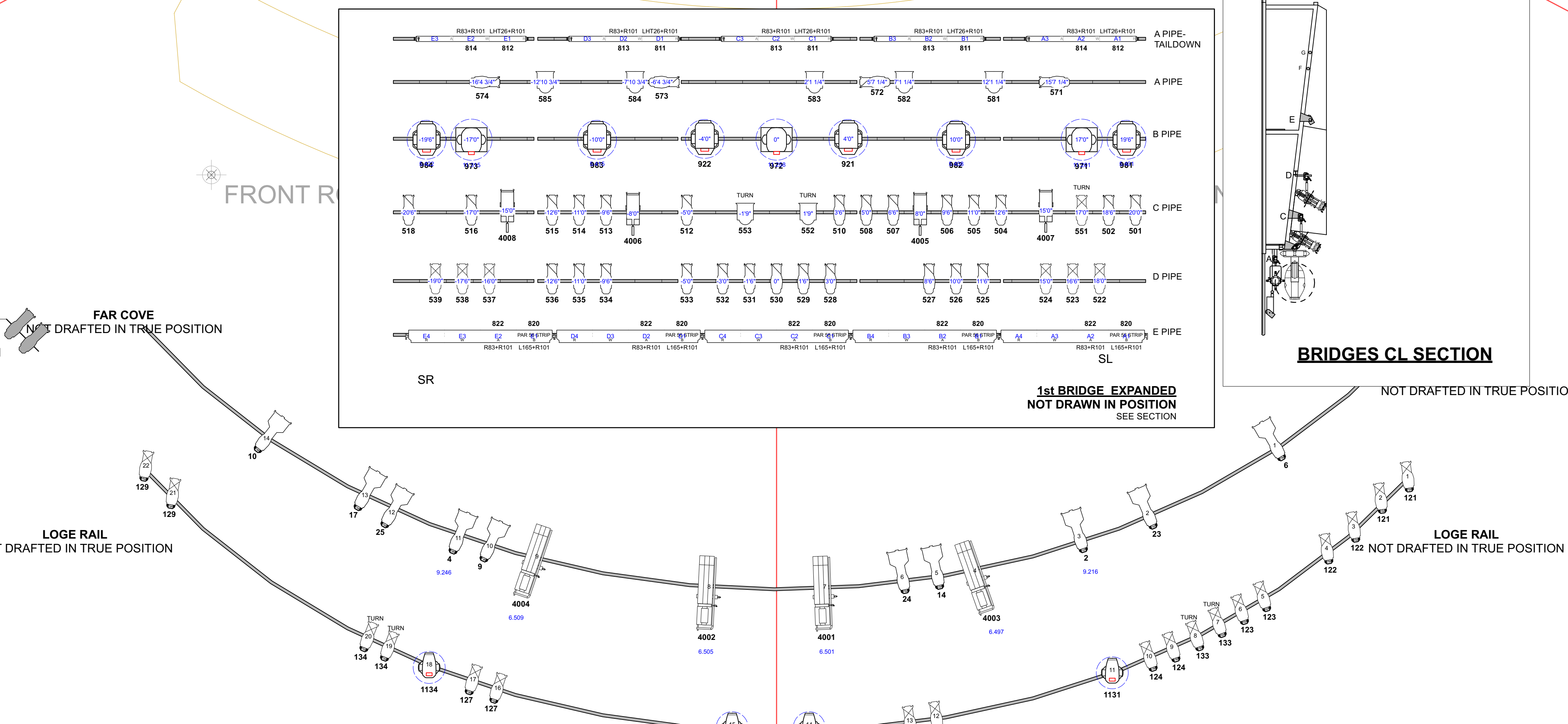
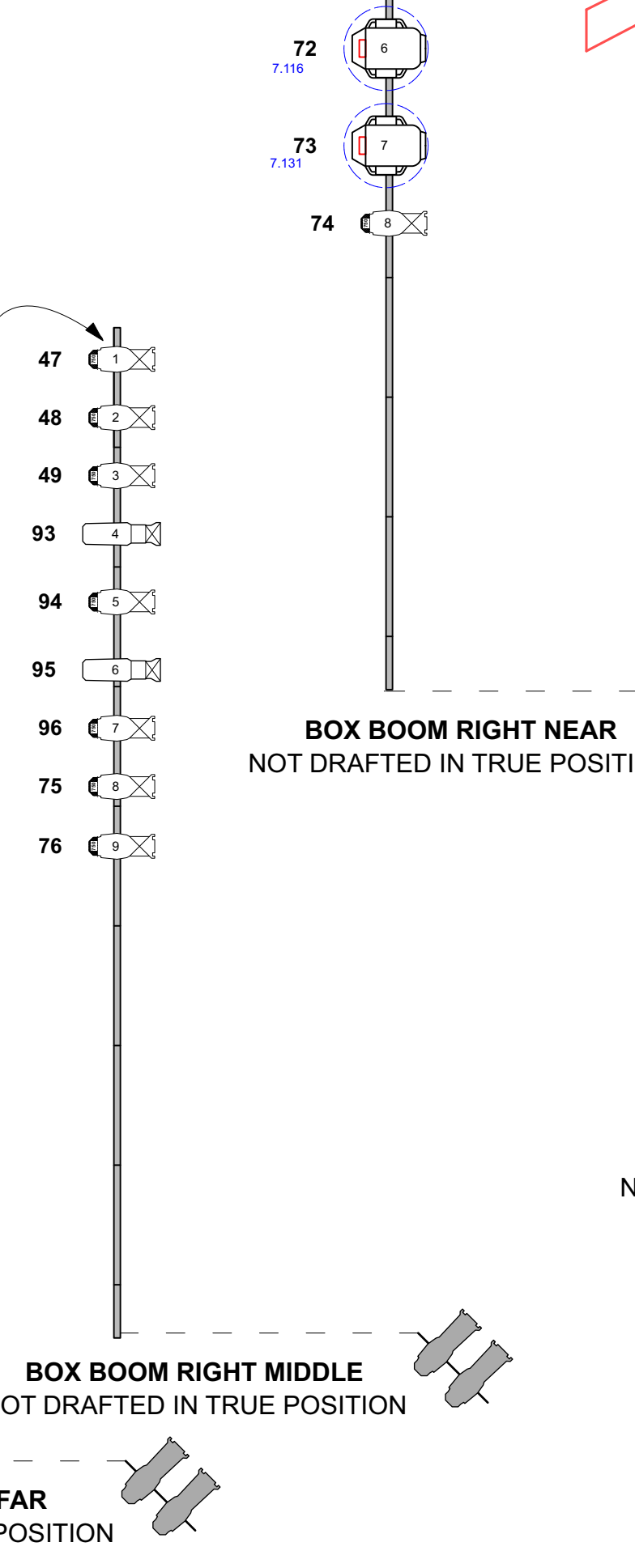
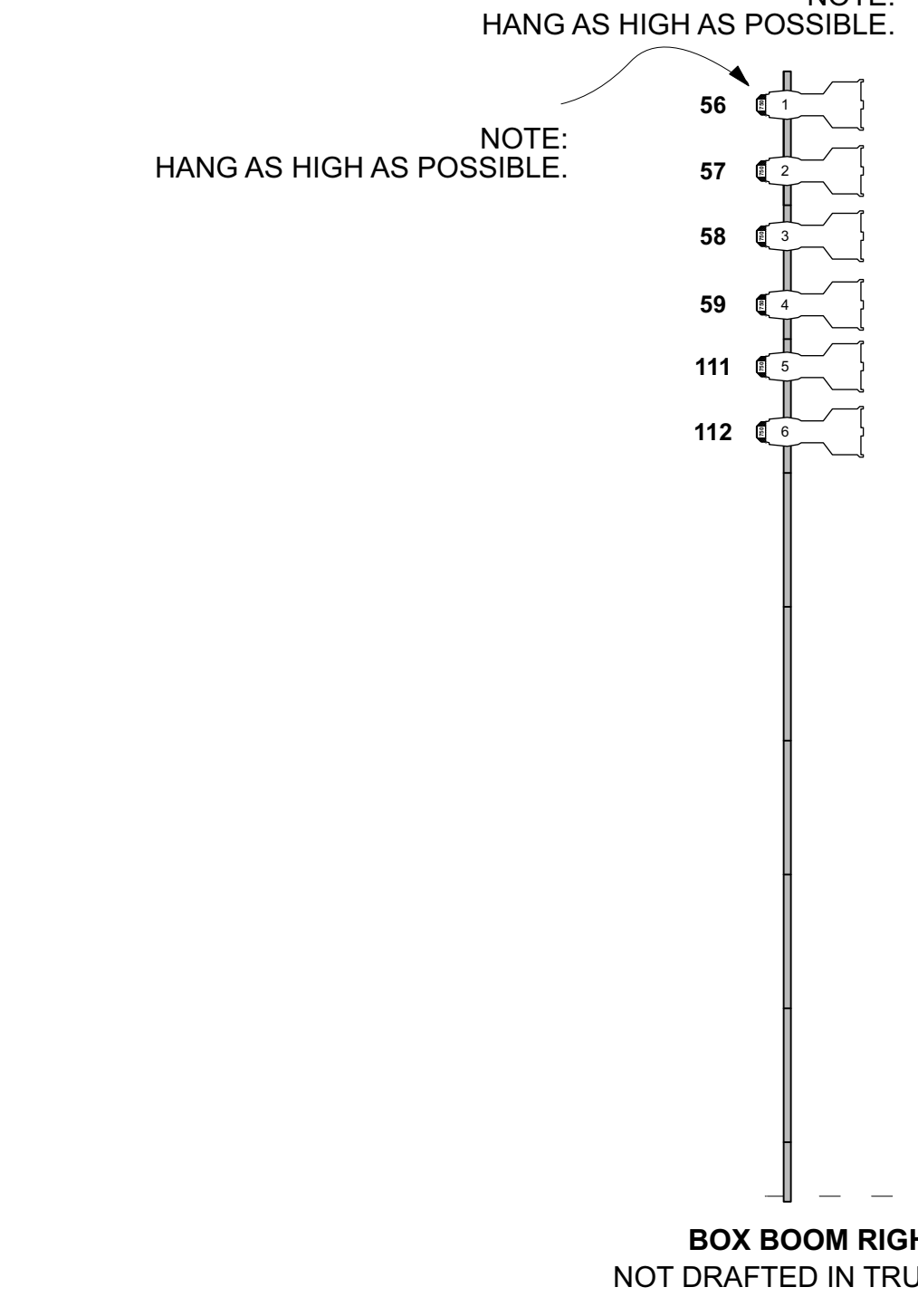


T3L		
T2L		
T1L	BLACK TAB (50)	ALL
T3R		
T2R		
T1R	BLACK TAB (50)	ALL
CSR		
CSL		
66		
65		
64		
C3	TURANDOT CYC	ALL
C1		
63		
62		
61		
60		
59		
58		
57		
56	ACT II PALACE BORDER	ACT II
55		
54		
53	SCN. 32 CUT DROP #5	32
52		
51	ACT I "D" UNIT CEILING U.S. PART I	
50		
49		
48		
47	#3 SHOW BORDER	ALL
46		
45	SCN. 32 CUT DROP #4	32
44	SCN. 31 CUT DROP #5	31
43	ACT I "D" UNIT CEILING M.S. PART I	
42		
41	ACT II PALACE CEILING U.S. PART II	
40		
39		
38	ACT II PALACE CEILING M.S. PART II	
37		
36	SCN. 32 CUT DROP #3	32
35	SCN. 31 CUT DROP #4	31
34		
33		
32	ACT I "D" UNIT CEILING / ACT II PALACE CEILING	
31		
30		
29		
28	#2 SHOW BORDER	ALL
27		
26		
25	SCN. 32 CUT DROP #2	32
24	SCN. 31 CUT DROP #3	31
23		
22	ACT II S.L. ROOF	ACT II
21		
20	S.L. ROOF PICKUP (U.S.)	ACT I
19	SCN. 21 BACKING	21
18	SHOW LEGS	ALL
17	S.R. ROOF PICKUP (U.S.)	ACT I, II
16	S.R. ROOF PICKUP (D.S.)	ACT I, II
15		
14		
13	ACT I S.L. ROOF D.S.P.U. / SCN. BACKGROUND	
12	#1 SHOW BORDER	ALL
11	SCN. 21 CUT DROP	21, 32
10	SCN. 21 SCRIM / SCN. 31 CUT DROP	21, 31
9		
8		
7		
6		
5		
4	SCN. 31 CUT DROP #1	31
3		
2	BOW CURTAIN	ALL

117	CYC Wrap around #117	
116		
115		
114		
113		
112		
111		
110		
109		
108		
107		
106		
105		
104		
103		
102		
101		
100		
99		
98		
97		
96		
95		
94		
93		
92		
91		
90		
89		
88		
87		
86		
85		
84		
83		
82		
81		
80		
79		
78		
77		
76		
75		
74		
73		
72		
71		
70		
69		
68		
67		
66		
65		
64		
63		
62		
61		
60		
59		
58		
57		
56		
55		
54		
53		
52		
51		
50		
49		
48		
47		
46		
45		
44		
43		
42		
41		
40		
39		
38		
37		
36		
35		
34		
33		
32		
31		
30		
29		
28		
27		
26		
25		
24		
23		
22		
21		
20		
19		
18		
17		
16		
15		
14		
13		
12		
11		
10		
9		
8		
7		
6		
5		
4		
3		
2		



PRODUCTION	TURANDOT
DIRECTOR	GARNET BRUCE
DESIGNER	DAVID HOCKNEY
TRUCK	26'-0"
TEMP.	50
SCALE	SCENE
DATE	09/03/02
A.T.D.	L. KLEIN



- ALTMAN 3.5Q-12
- ALTMAN 3.5Q-4
- ALTMAN 3.5Q-8
- 6'-0" MR 16 STRIP
- ALTMAN 3" INKIE FRESNEL
- ALTMAN 6" FRESNEL
- ALTMAN T-3 CYC 6 CELLS
- ARRI BABY FRESNEL
- COLORFORCE II 48
- COLORFORCE II 72
- GAM STICK UP
- KLEIGL 44N8 2X FRESNEL
- KLEIGL 3508 750w FRESNEL
- MR16 BIRDY
- LYCIAN PANI SPOT
- PAR56 NSP BORDERLIGHT
- PAR 64 MFL
- PAR 64 NSP
- R40 6'-0" STRIP
- S4 LED 19
- S4 LED 26
- S4 10
- S4 10 - 750w
- S4 19 - 750w
- S4 26
- S4 26 - 750w
- S4 36
- S4 36 - 750w
- S4 50
- STRAND 2K FRESNEL
- STRAND IRi3 3 CELL
- STRAND ORION 1 CELL
- VL3500 SPOT
- AYRTON DIABLO
- CLAY PAKY AXCOR 600
- MARTIN MAC 2000 PERFORMANCE
- MARTIN MAC 2000 PROFILE
- VL3500 WASH
- VL500D