

Daily Pilot

SATURDAY, MAY 1, 2021 /// Now including Coastline Pilot and Huntington Beach Independent /// dailypilot.com

Mariners Mile proposal on ice

Planning Commission gave its approval to the mixed-use project on Feb. 18.

BY LILLY NGUYEN

Plans for a mixed-use project proposed for Mariners Mile are hitting the brakes — at least until May, so city staff can return before the Newport Beach City Council with answers to questions about parking requirements, density bonuses and compliance of the overall project with the city's general plan.

The proposed project initially received approval by the Planning Commission in February, but was pulled for further consideration by Mayor Brad Avery in March after Avery said he heard from residents that said they were concerned about the possible impacts of the project, which is one of several major developments expected to come down the line for the 1.3-mile stretch of Pacific Coast Highway.

The council decided on a 4-1 vote at its regular meeting Tuesday that it will review the project at 2510 W. Coast Highway during its May 25 meeting.

Mayor Pro Tem Kevin Muldoon cast the lone dissenting vote. Councilmen Duffy Duffield and Noah Blom recused themselves prior to consideration of the item.

The area was pinned previously for revitalization efforts by the city in 2011, but residents expressed significant concerns that left a potential master plan for the area up in the air. Mariners Mile

See *Mariners*, page A2

Man gets 5-plus years for fist fight in H.B.

BY SARA CARDINE

A 28-year-old man pleaded guilty and will serve more than five years in state prison for beating a man unconscious during a Huntington Beach fist fight in February 2020, according to court records.

Brandon Lee Green faced one felony charge of attempted murder and two felony counts of assault with force likely to produce great bodily injury. Prosecutors charged him with multiple enhancements, including attempted premeditated murder and inflicting great bodily injury, which stood to extend Green's prison time.

Charges stem from a Feb. 18, 2020, incident, during which Green became involved in a physical altercation with a man he knew and had been arguing with at Pacific Coast Highway and Ninth Street in Huntington Beach at around 2:30 a.m., City News Service reported.

The other man fell and was knocked unconscious. He was later taken to a nearby hospital and treated for non-life-threatening injuries, a Huntington Beach police officer reported to the news outlet in 2020.

Green was arrested and held on \$1-million bail. In an Orange County courtroom on Wednesday, he pleaded guilty to attempted murder and felony assault, in addition to one misdemeanor count of battery.

See *Fight*, page A3



Kevin Chang | Staff Photographer

FROM LEFT, Bob Brooks, Zach Jones, Hank Castignetti and Jordan Rivera, volunteers with the Orange County Model Engineers, stand in front of the Hank Hornsveld Memorial Trestle in Costa Mesa's Fairview Park.

O.C. Model Engineers on track to replace tiny trestle

BY SARA CARDINE

A trestle bridge at Costa Mesa's Fairview Park, beloved by model train enthusiasts — and hundreds of thousands of children and adults who've ridden the miniature rails there — after 30 years is in need of a serious facelift.

But replacing the tiny trestle is likely a herculean feat, say members of the nonprofit Orange County Model Engineers, who've been attempting to rally support for its repair during a pandemic that has seen ridership decrease to historic lows.

A GoFundMe campaign to raise the \$25,000

needed to replace the old, interior-grade timbers had, by Thursday, mustered a little more than \$2,300. Once the capital has been earned, group members will design and rebuild the structure in a 100% volunteer effort.

O.C. Model Engineer secretary Hank Castignetti, who also serves as a liaison on Costa Mesa's Fairview Park Steering Committee, said members are up to the task. With a six-year, \$300,000 effort to replace more than 4 miles of track line and railroad ties at the 40-acre Goat Hill Junction nearly complete, the trestle is next on the team's to-do list.

JEFF SUMNERS, left, and Gary Kimble, with the Orange County Model Engineers club, work on repairing track on Sept. 18.



Scott Smeltzer Staff Photographer

Laguna council to discuss new city manager's contract

BY ANDREW TURNER

Following the appointment of Shohreh Dupuis to become the next city manager of Laguna Beach, the Laguna Beach City Council will consider the employment contract under which Dupuis will begin working in her new role.

Dupuis, who currently works as assistant city manager for the city of Laguna Beach, was chosen by a unanimous vote to

succeed John Pietig, the retiring city manager, at a closed session meeting of the council on Tuesday.

The start date for Dupuis as city manager is expected to be June 12, the date when the retirement of Pietig takes effect.

At the direction of the council, both the city attorney, Phil Kohn, and Gary Phillips, the executive recruiter brought in to conduct a national search for city manager candidates, met

with Dupuis to work out the framework of a contract.

Terms of the proposed contract include a base salary of \$275,000 for Dupuis when she starts as city manager, according to a staff report. The current salary for Pietig is \$286,829.

Dupuis' salary as assistant city manager is \$238,056, but when two adjustments are accounted for leading into next year, her salary would be \$250,108 as of Jan. 1, 2022.

The proposed contract would mark a pay increase of roughly 10% for Dupuis over her earnings as assistant city manager come January.

The proposal would be for an initial three-year term with an automatic two-year extension.

The council could elect not to extend Dupuis past the first three years, but it would have to inform her of that decision at

See *Laguna*, page A2

Donut worry, be happy — beach closures just a bad memory

This time last year, Gov. Gavin Newsom issued a sweeping beach closure order that sent ripples throughout coastal Orange County cities and incited the fury of locals already frustrated with the stay-at-home order issued just a month previous.

That wasn't still the case Friday morning, least of all in Newport Beach, where Councilman Will O'Neill — acting in his capacity only as a resident, not on behalf of the city — was handing out about 12 dozen doughnuts that he bought from Seaside Donuts.

State and local beaches have since reopened. After a rough winter, the county is now in the orange tier and is close to qualifying for the next and final tier in the state's reopening blueprint. Moreover, the state is preparing for a full reopening

June 15.

O'Neill said he considered Friday an opportunity to spin what was a negative incident into something that was positive because "we have to find positives everywhere we can these days."

"Last year, having our beaches closed was a large negative. It did seem targeted and against the data and science that was showing large, open spaces outdoors was safer than indoor and closed spaces," O'Neill said in an interview Friday.

He said the doughnut giveaway was a way to show support to local businesses and remind people to shop locally.

"There was a lot of anger and frustration that came out of [the beach closures], but if what we can do with that is remember that decision while also being on an open beach and [in] the



Kevin Chang | Staff Photographer

NEWPORT BEACH City Councilman Will O'Neill, center, speaks to Newport Elementary School students on their way to class as he gives out doughnuts on the beach in front of Dory Deli on Friday morning.

company of people who were there when it happened last year, then at least we're coming together as a community,"

O'Neill said. "We want to turn a negative into as much of a positive as we can." — From staff reports

County returns vaccine to list

Plans are announced to resume giving the Johnson & Johnson vaccine in O.C. on Sunday.

BY ANDREW TURNER

Orange County plans to resume its use of the Johnson & Johnson vaccine beginning Sunday, county health officials announced Thursday.

The Centers for Disease Control and Prevention had previously recommended a pause in administering the Johnson & Johnson vaccine after a rare blood clot was discovered in six women between the ages of 18 and 48.

"Community members are strongly encouraged to get vaccinated as soon as possible to help slow the spread of this virus," Dr. Clayton Chau, director of the Orange County Health Care Agency and the county health officer, said in a prepared statement.

"The county now offers three FDA-authorized vaccines that patients can select from when scheduling an appointment — Pfizer, Moderna and J&J — so that individuals have a variety of options to choose from. All vaccines are proven to be highly effective at preventing hospitalization or death from COVID-19."

Last week, the county also

See *Vaccine*, page A3

ALSO FROM THE DAILY PILOT:



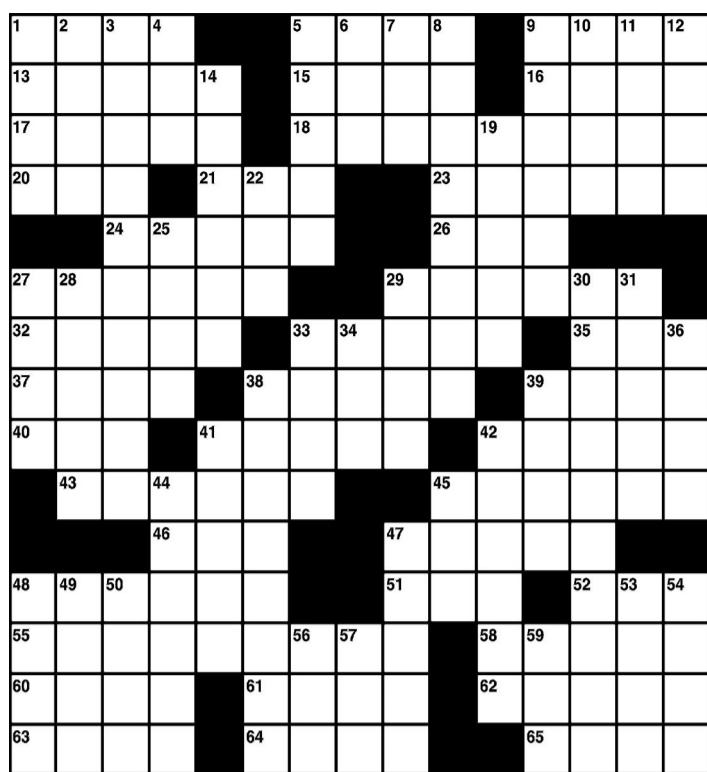
Courtesy of Harshul Patel

FOUNTAIN VALLEY GIRLS' TENNIS WINS FIRST LEAGUE TITLE SINCE 1991 PAGE A4

THE DAILY COMMUTER PUZZLE

By Jacqueline E. Mathews

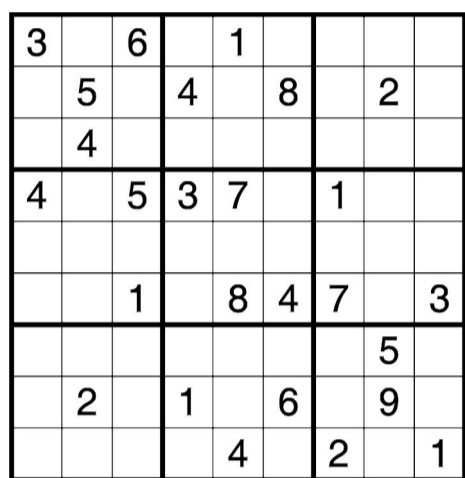
- ACROSS**
 1 Wasn't _ of; disliked
 5 Sty supper
 9 British fellow
 13 Lanai feasts
 15 Bosc or Bartlett
 16 Doily material
 17 Band of eight
 18 Poison remedies
 20 _ Beta Kappa
 21 Calendar pg.
 23 Most modern
 24 Sworn promises
 26 Brown shade
 27 Washed out shampoo
 29 20th-century U.S. president
 32 Dam across the Nile
 33 Advances money
 35 Solemn pledge
 37 Put on weight
 38 Human _; person
 39 Celebration
 40 Depressed
 41 Theater walkway
 42 Got it wrong
 43 Comes to an end
 45 Reprimands
 46 _ and tonic
 47 Thingamajig
 48 Gift from a crocheter
 51 Take advantage of
 52 "Son _ gun!"
 55 Reapers' leftovers
 58 Manufacturer
 60 Breaks a fast
 61 Lie next to
 62 Representative
 63 Quarrel
 64 _ into; attacks verbally
 65 Chances
- DOWN**
 1 Disaster
 2 Elbow-bumper's



SUDOKU

By The Mephram Group

Complete the grid so each row, column and 3-by-3 box (in bold borders) contains every digit, 1 to 9. For strategies on how to solve Sudoku, visit sudoku.org.uk.



For answers to the crossword and Sudoku puzzles, see page A4.

- | | |
|----------------------------------|----------------------------|
| cry | forte |
| 3 From coast to coast | 9 Chuckles & Bozo |
| 4 _ date; pregnant woman's focus | 10 Abhor |
| 5 Ship poles | 11 Big diamonds |
| 6 Actor Cariou | 12 Annoying person |
| 7 Cereal grain | 14 NY's _ Island |
| 8 Currier & Ives' | 19 Works a blackjack table |

- 22 Advanced deg.
 25 As wise _ owl
 27 Tattered cloths
 28 Abraham's son
 29 Dwindle
 30 Didn't notice
 31 Famous
 33 Not as much
 34 Engine's need
 36 Marries
 38 Occurring every two years
 39 " _ Here to Eternity"
 41 Thai or Chinese
 42 Atopic dermatitis
 44 Horrified
 45 Eunice, to JFK
 47 Far more than breezes
 48 Gets older
 49 Envelope part
 50 " _ load of that!"
 53 _ for oneself; go it alone
 54 Linkletter & others
 56 Org. for Kings & Knicks
 57 Wise _; smart aleck
 59 Long _; way back when

Tribune Media Services

AROUND TOWN

Laguna Art Museum to exhibit photographer Matthew Rolston's work

The Laguna Art Museum has announced it will be presenting a solo exhibition of the work of renowned photographer Matthew Rolston. Dr. Malcolm Warner, who recently retired as executive director of the museum, will serve as curator for the exhibit, "Matthew Rolston, Art People: The Pageant Portraits." Rolston's work will be on display at the museum from June 27 to Sept. 19. The photos to be exhibited will focus on participants in the Pageant of the Masters, an annual festival in town put on by the Festival of Arts. "How fortunate for us that a photographer of Matthew's stature found a perfect subject for his art in Laguna Beach," Warner said in a statement. "We're proud to be showcasing his genius and celebrating the fabulous 'art people' of the Pageant of the Masters."

Newport (virtual) Garden Tour tickets still available

A unique virtual experience is planned for this year's Newport Beach Garden Tour hosted by the Sherman Library & Gardens' Volunteer Assn., which will launch the presentation on May 8. This year will include a number of dis-

tinctive Southern California properties, from Beverly Hills and Pasadena in Los Angeles County south to Newport Beach, Laguna Beach and San Clemente. "Because we knew we were going 'virtual' this year, we looked beyond Newport Beach and Orange County to bring gardens that normally wouldn't be part of a traditional garden tour to our viewers. Several of the homeowners on this year's tour, while proud of their gardens, wish to remain anonymous." To that end, the 'virtual' video format works perfectly," said Scott LaFleur, executive director of Sherman Library & Gardens, in a news release announcing the event. Those who purchase tickets for the tour will receive an email with a link and password, and be able to watch and rewatch the garden videos at their leisure. Tickets to the Newport Beach Virtual Garden Tour start at \$20. For more information, or to purchase tickets, visit thesherman.org or call (949) 673-2261.

Costa Mesa has part-time lifeguard job openings

Qualified applicants are being sought by the city of Costa Mesa Parks and Community Services Department's aquatics program for part-time positions as lifeguard, instructor guard and senior guard.

See **Town**, page A4

LAGUNA

Continued from page A1

least six months prior to the end of that term. The regular council meeting will begin at 5 p.m. on Tuesday.

Members of the public may speak before the council in person as part of the hybrid meeting, but they must wear a face covering when entering council chambers and exit after speaking on their subject of interest.

The meeting can also be seen over Zoom by going to lagunabeachcity.zoom.us/j/93572563925, as well as by tuning in to Cox cable channel 852. andrewturner@latimes.com Twitter: @ProfessorTurner

MARINERS

Continued from page A1

stretches between Newport Boulevard and Dover Drive.

This is the first mixed-use development project to come to the area since the city's last general plan update in 2006.

The 2510 W. Coast Highway project would replace an existing marine facility at 2510 and 2530 W. Coast Highway with a development that would include three stories with 35 residential units and a one-story 11,266-square-foot boutique auto showroom. Of those 35 units, about three would be designated low-income. Principal planner Matt Schneider said at the February Planning Commission meeting that the facility was established in 1960, but later expanded into the property on 2530 W. Coast Highway in 2001. Public comment Tuesday night was dominated by members of the Coalition to Protect Mariners Mile and residents living in the nearby Newport Heights neighborhood concerned about the obstruction of views from John Wayne Park, traffic, safety and the precedents being set forth by the 2510 project for later developments to come. Residents asked the council to continue the project instead of voting on its fate Tuesday, with many arguing that they were pro-development but that they did not feel the proposed project was reflective of the surrounding area or character of Mariners Mile and, more



Don Leach | Staff Photographer

A VIEW OF Mariners Mile looking south along PCH.

broadly, Newport Beach as a whole.

Several requested that story poles be staked around the property so people could more easily gauge the heights and scope of the project.

Applicant Mark Moshayedi, who owns the property, said his team and city staff have been working on the project for two years.

He said the project was in compliance with all the directives and constraints given to them thus far by the city of Newport Beach.

"All we've tried to do as a developer is to follow the rules that are set by the city of Newport Beach and the plan, as we've worked with the city for two years, you can ask your staff ... we've tried to stay compliant," Moshayedi told the City Council.

Moshayedi and Manouch Moshayedi purchased eight acres of Mariners Mile from Ardell Investment Co. in 2016.

The council members primarily grappled with the Housing Accountabil-

ity Act, a senate bill passed in 2017 that prohibits local jurisdictions from rejecting housing developments that comply with local planning regulations unless they are proven to be a danger to public health or safety.

They also listened to residents' concerns centering on building heights — particularly the potential for their views to be destroyed — traffic issues and parking.

"This [Housing Accountability Act] is complicated. It's hard. There's no question it's meant to be, well — it's actually meant to be easy. It's meant to be 'Approve the housing,' right? That's what the state's trying to tell us to do," Councilman Will O'Neill said.

"We're trying to analyze this within our own standards and I think that's appropriate to do and every city council should try to do that, but we should do it right," he said.

lilly.nguyen@latimes.com Twitter: @lilibirds

You are unique and so is your taste in wine



6 bottles for \$39.95
 Valued over \$120

Take the quiz and receive delicious wines curated to your palate.

Get your wines at **LATimes.Wine/Fresh**
 FREE SHIPPING TO YOUR DOOR



SELL ME YOUR CAR

Currently in need of **BMW, Mercedes-Benz, Porsche, Lexus, Acura, Cadillac, Honda, Toyota** vehicles under 100k miles.

Before you trade in, call me, **Tim the owner,** for a cash offer @ **949-752-2277** or email info to **OCAW777@GMAIL.COM**



1852 McGaw Ave. Irvine, CA 92614

LAA-629966-1



Kevin Chang | Staff Photographer

DR. CLAYTON CHAU, right, director of the Orange County Health Care Agency, and Orange County 2nd District Supervisor Katrina Foley, left, answer questions during the opening of the COVID-19 vaccination super POD site at the Orange County fairgrounds in Costa Mesa.

VACCINE

Continued from page A1

made the decision to close its Disneyland drive-through vaccination Super POD (point of distribution) on Friday, when the amusement park reopened to the public. County officials estimated that 233,000 vaccine doses will have been administered at the site from its Jan. 13 start date to its closure.

"I want to remind the community that our Soka University, Santa Ana College, and the OC Fair & Event Center Super PODs currently offer ADA-compliant drive-through lanes to continue meeting the needs of individuals with disabilities," Chau said in an announcement about the Disneyland vaccination site closure on April 23. "We're not going away — we're just balancing the changing needs of eligible patients with our staffing and vaccine allocations to ensure we can be as responsive as possible."

Vaccination appointments can be made by visiting othena.com.

Orange County reported nine coronavirus deaths and 68 new infections of COVID-19, the disease caused by the virus, in Friday's updated numbers.

There have been 4,957 deaths countywide attributed to a bout with the virus, and the cumulative case count in the county is 253,848.

Hospitalizations resulting from the virus were at 113, with 22 of those patients being treated in intensive care units. The county also reported 10,798 tests for the virus on Friday, bringing the total number of tests administered to 3,657,088.

Orange County, which is in the orange tier (moderate transmission), had an adjusted daily case rate of 2.6 cases per 100,000 residents as of Tuesday. To

meet the yellow-tier criteria for that metric, a county must have less than two daily new cases per 100,000 residents.

The county also has a testing positivity rate of 1.4% and a health equity quartile positivity rate of 1.9%. All three metrics are tracked as seven-day averages with a seven-day lag.

Here are the latest cumulative coronavirus case counts and COVID-19 deaths for select cities in Orange County:

- Santa Ana: 44,783 cases; 849 deaths
Anaheim: 41,841 cases; 865 deaths
Huntington Beach: 10,752 cases; 216 deaths
Costa Mesa: 8,987 cases; 137 deaths
Irvine: 10,662 cases; 86 deaths
Newport Beach: 3,871 cases; 75 deaths
Fountain Valley: 3,514 cases; 85 deaths
Laguna Beach: 855 cases; seven deaths

Here are the case counts by age group, followed by deaths:

- 0 to 17: 26,564 cases; one death
18 to 24: 35,172 cases; 10 deaths
25 to 34: 50,673 cases; 53 deaths
35 to 44: 39,455 cases; 107 deaths
45 to 54: 40,613 cases; 315 deaths
55 to 64: 31,941 cases; 705 deaths
65 to 74: 15,813 cases; 956 deaths
75 to 84: 8,019 cases; 1,229 deaths
85 and older: 5,423 cases; 1,581 deaths

Updated figures are posted daily at occovid19.ochalthinfo.com/coronavirus-in-oc. Information on COVID-19 vaccines in Orange County can be found at occovid19.ochalthinfo.com/covid-19-vaccine-resources.

andrew.turner@latimes.com
Twitter: @ProfessorTurner

FIGHT

Continued from page A1

In exchange for his plea, a felony enhancement for attempted premeditated murder and three more enhancements for inflicting great bodily injury were dismissed.

Green also offered guilty pleas for two misdemeanor battery charges brought by prosecutors in another case, involving a separate incident that occurred on Jan. 22, 2020. Court documents indicate charges in that case were also dismissed. It is unclear whether his pleading guilty in that incident was part of a plea deal.

Green was sentenced Wednesday to serve five years in state prison for attempted murder.

He also received a one-year sentence for the felony assault charge — one-third of which is to run consecutively with the other prison term — and a six-month jail sentence. A Superior Court judge also ordered him to pay restitution for his crimes.

Green is currently being held in Orange County's Theo Lacy Facility and is scheduled to appear in court May 13 for a firearms relinquishment hearing, court records indicate.

sara.cardine@latimes.com
Twitter: @SaraCardine

Daily Pilot advertisement including contact information for Carol Cormaci, Raymond Arroyo, and business office details.

MARKETPLACE

To place an ad, go to http://timescommunityadvertising.com/

Legal Notices

CITY OF LAGUNA BEACH: ADOPTION OF ORDINANCE NO. 1657 REGARDING THE REGULATION OF COMMERCIAL PARKING

Adoption of Ordinance No. 1657 entitled "AN ORDINANCE OF THE CITY OF LAGUNA BEACH CORRECTING CLERICAL ERRORS REGARDING LOCAL COASTAL PROGRAM AMENDMENT 18-1938 AND ZONING ORDINANCE AMENDMENT 18-1937 TO AMEND LAGUNA BEACH MUNICIPAL CODE AS MODIFIED BY THE CALIFORNIA COASTAL COMMISSION RELATING TO THE REGULATION OF COMMERCIAL PARKING" was introduced at the City Council meeting of April 20, 2021, and is scheduled to be adopted on May 4, 2021, on the following 5-0 vote: AYES: Blake, Iseman, Weiss, Kempf, Whalen, NOES: None, ABSENT: None. The proposed Ordinance will amend Chapters 25.08 and 25.52. Ann Marie McKay, City Clerk



CITY OF NEWPORT BEACH NOTICE OF PUBLIC HEARING

NOTICE IS HEREBY GIVEN that on Thursday, May 13, 2021, at 10:00 a.m. or soon thereafter as the matter shall be heard, a public hearing will be conducted online via Zoom The Zoning Administrator of the City of Newport Beach will consider the following application:

500 Orchid LLC Condominiums - A request for a tentative parcel map for two-unit condominium purposes. An existing duplex will be demolished, and a new duplex will be constructed. The Tentative Parcel Map would allow each unit to be sold individually. No waivers of Title 19 (Subdivisions) are proposed.

The project is categorically exempt under Section 15315 - Class 15 (Minor Land Divisions) of the State CEQA (California Environmental Quality Act) Guidelines.

All interested parties may appear and present testimony in regard to this application. If you challenge this project in court, you may be limited to raising only those issues you raised at the public hearing or in written correspondence delivered to the City, at, or prior to, the public hearing. Administrative procedures for appeals are provided in the Newport Beach Municipal Code Section 19.12.060 (Subdivision Code). The application may be continued to a specific future meeting date, and if such an action occurs, additional public notice of the continuance will not be provided.

SPECIAL NOTICE REGARDING COVID-19

Given the Declaration of a State Emergency and Proclamation of Local Emergency related to COVID-19, we recommend that you submit your questions and comments in writing for the Zoning Administrator's consideration by sending them to the Community Development Department at CDD@newportbeachca.gov. To give the Zoning Administrator adequate time to review your questions and comments, please submit your written comments by Wednesday, May 12, 2021, at 12:00 p.m. In addition, members of the public will have the ability to participate in this meeting telephonically. Please review the Zoning Administrator Agenda for further instructions. The Agenda, staff report and corresponding documents will be posted to the City's website at www.newportbeachca.gov/zoningadministrator, by end of business day on Friday, May 7, 2021. While the City does not expect there to be any changes to the above process for participating in this meeting, if there is a change, the City will post the information as soon as possible to the City's website. The City of Newport Beach thanks you in advance for continuing to take precautions to prevent the spread of the COVID-19 virus. If you are unable to participate in the meeting via the process set forth in the agenda, please contact the Planning Division at 949-644-3200 or CDD@newportbeachca.gov and our staff will attempt to accommodate you.

For questions regarding this public hearing item please contact Victoria Kim, Planning Technician, at 949-644-3235 or vkim@newportbeachca.gov.

Project File No.: PA2021-033 Activity No.: NP2021-002

Zone: R-2 (Two-Unit Residential) General Plan: RT (Two Unit Residential)

Location: 500 and 500 1/2 Orchid Avenue Applicant: 500 Orchid LLC

Sell your Car in Classified! Advertise in CLASSIFIED Today timescommunityadvertising.com

CLASSIFIED advertisement: It's the solution you're searching for-whether you're seeking a home, apartment, pet or new occupation!

Legal Notices

CITY OF NEWPORT BEACH NOTICE OF PUBLIC HEARING CORRECTION OF MEETING DATE



NOTICE IS HEREBY GIVEN that on Thursday, May 06, 2021, at 6:30 p.m. or soon thereafter as the matter shall be heard, a public hearing will be conducted in the Council Chambers at 100 Civic Center Drive, Newport Beach. The Planning Commission of the City of Newport Beach will consider the following application:

OC Veterinary Center - The Applicant proposes a full-service animal clinic for domestic pets (i.e., veterinary services) within an existing 3,414-square-foot retail tenant space. Clinic services include a range of outpatient offerings such as preventive animal care and pain management, wellness exams, surgeries, and vaccinations. Only animals in critical condition would be kept on-site longer than 24 hours. The hours of operation would be restricted to between 8 a.m. to 6 p.m., Monday to Friday; 9 a.m. to 4 p.m. on Saturday; and closed on Sunday.

The project is categorically exempt under Section 15301 - Class 1 (Existing Facilities) of the State CEQA (California Environmental Quality Act) Guidelines.

All interested parties may appear and present testimony regarding this application. If you challenge this project in court, you may be limited to raising only those issues you raised at the public hearing or in written correspondence delivered to the City, at, or prior to, the public hearing. Administrative procedures for appeals are provided in the Newport Beach Municipal Code Chapter 20.64. The application may be continued to a specific future meeting date, and if such an action occurs, additional public notice of the continuance will not be provided.

SPECIAL NOTICE REGARDING COVID-19

Given the Declaration of a State Emergency and Proclamation of Local Emergency related to COVID-19, we recommend that you submit your questions and comments in writing for Planning Commission consideration by sending them to the Community Development Department at PlanningCommissioners@newportbeachca.gov. To give the Planning Commission adequate time to review your questions and comments, please submit your written comments by Wednesday, May 5, 2021, at 5 p.m. In addition, members of the public will have the ability to participate in this meeting telephonically. Please review the Planning Commission Agenda for further instructions. The Agenda, staff report and corresponding documents will be posted to the City's website at www.newportbeachca.gov/planningcommission, by end of business day on Friday, April 30, 2021. While the City does not expect there to be any changes to the above process for participating in this meeting, if there is a change, the City will post the information as soon as possible to the City's website. The City of Newport Beach thanks you in advance for continuing to take precautions to prevent the spread of the COVID-19 virus. If you are unable to participate in the meeting via the process set forth in the agenda, please contact the Planning Division at 949-644-3200 or CDD@newportbeachca.gov and our staff will attempt to accommodate you.

For questions regarding this public hearing item please contact Patrick Achis, Assistant Planner, at 949-644-3237, pachis@newportbeachca.gov, 100 Civic Center Drive, Newport Beach, CA 92660.

Project File No.: PA2020-325 Activity No.: UP2020-191

Zone: PC-5 (Newport North Planned Community) General Plan: CG (General Commercial)

Location: 1220 Bison Avenue Applicant: Architectural Werks, Inc.

Lauren Kleiman, Secretary, Planning Commission, City of Newport Beach

Advertise in CLASSIFIED Today timescommunityadvertising.com Sell your Car in Classified!

CLASSIFIED advertisement: It's the solution you're searching for-whether you're seeking a home, apartment, pet or new occupation!

City of Newport Beach Draft Environmental Impact Report (EIR) for the Residences at Newport Center Project. Includes project description, major site development review, and significant effects on the environment.

LEGAL NOTICE: City of Newport Beach Notice of Public Hearing regarding the Mixed-Use Dover/Westcliff (MU-DW) Zoning District Code Amendment. Includes project description, public hearing information, and special notice regarding COVID-19.

Bids Wanted

Bids Wanted

City of Costa Mesa Request for Proposal No. 21-10 COVID-19 Testing Services. NOTICE IS HEREBY GIVEN that electronic proposals shall be received by the City of Costa Mesa through PlanetBids website. It shall be the responsibility of the proposer to submit electronically through PlanetBids website, and on or before 10:00 a.m. (P.S.T) on Wednesday, May 19, 2021.

If you have additional questions, please contact Jacqueline Nguyen, via e-mail at jackqueline.nguyen@costamesaca.gov.

City of Costa Mesa 77 Fair Drive P.O. Box 1200 City Clerk's Office Costa Mesa, CA 92626-1200 Phone: 714-754-5305 Fax: 714-754-5040 SUBMITTED: Thursday, April 29, 2021



CITY OF NEWPORT BEACH NOTICE OF PUBLIC HEARING

NOTICE IS HEREBY GIVEN that on Thursday, May 13, 2021, at 10:00 a.m. or soon thereafter as the matter shall be heard, a public hearing will be conducted online via Zoom. The Zoning Administrator of the City of Newport Beach will consider the following application:

Katkin Residence - A coastal development permit to allow the demolition of an existing single-family residence and the construction of a new, approximately 5,750-square-foot, two-story residence including an attached three-car garage. The project also includes additional appurtenances such as site walls, fences, patios, spa, drainage devices, and landscaping. The design complies with all applicable development standards, including height, setbacks, and floor area limit, and no deviations are requested.

The project is categorically exempt under Section 15303 under Class 3 (New Construction or Conversion of Small Structures) of the State CEQA (California Environmental Quality Act) Guidelines.

All interested parties may appear and present testimony in regard to this application. If you challenge this project in court, you may be limited to raising only those issues you raised at the public hearing or in written correspondence delivered to the City, at, or prior to, the public hearing. The application may be continued to a specific future meeting date, and if such an action occurs, additional public notice of the continuance will not be provided. Administrative procedures for appeals are provided in the Newport Beach Municipal Code Chapter 21.64. A fee is not required to appeal any final action on a coastal development permit to the Planning Commission. The project site is located within the appeal area of the coastal zone; therefore, final action by the City to approve a Coastal Development Permit may be appealed to the California Coastal Commission.

Given the Declaration of a State Emergency and Proclamation of Local Emergency related to COVID-19, we recommend that you submit your questions and comments in writing for the Zoning Administrator's consideration by sending them to the Community Development Department at CDD@newportbeachca.gov. To give the Zoning Administrator adequate time to review your questions and comments, please submit your written comments by Wednesday, May 12, 2021, at 12:00 p.m. Please review the Zoning Administrator Agenda for participation instructions. The Agenda, staff report and corresponding documents will be posted to the City's website at www.newportbeachca.gov/zoningadministrator, by end of business day on Friday, May 7, 2021. The City of Newport Beach thanks you in advance for continuing to take precautions to prevent the spread of the COVID-19 virus. If you are unable to participate in the meeting via the process set forth in the agenda, please contact the Planning Division at 949-644-3200 or CDD@newportbeachca.gov and our staff will attempt to accommodate you.

Project File No.: PA2021-059 Activity No.: CD2021-011

Zone: R-1 (Single-Unit Residential) General Plan: RS-D (Single Unit Residential Detached)

Coastal Land Use Plan: RSD-B (Single Unit Residential Detached) - (6.0 - 9.9 DU/AC) Filing Date: March 15, 2021

Location: 2500 Marino Drive Applicant: Eric Olsen Design

LEGAL NOTICE

CITY OF NEWPORT BEACH NOTICE OF PUBLIC HEARING

NOTICE IS HEREBY GIVEN that on Tuesday, May 11, 2021, at 4:00 p.m. or soon thereafter as the matter shall be heard, a public hearing will be conducted in the City Council Chambers at 100 Civic Center Drive, Newport Beach. The City Council of the City of Newport Beach will consider the following application:

Mixed-Use Dover/Westcliff (MU-DW) Zoning District Code Amendment - An amendment to Table 2-8 (Allowed Uses and Permit Requirements) of Section 20.22.020 (Mixed-Use Zoning District Land Uses and Permit Requirements) of the Newport Beach Municipal Code. This amendment will allow eating and drinking establishments (i.e., restaurants) and larger health/fitness facilities (i.e., gyms) in the MU-DW District, subject to meeting the parking requirements and obtaining a use permit.

The project is exempt from environmental review under the California Environmental Quality Act (CEQA), pursuant to Section 15382 of the CEQA Guidelines, California Code of Regulations, Title 14, Division 6, Chapter 3, because it involves feasibility or planning studies for possible future actions which the agency, board, or commission has not approved or adopted.

NOTICE IS HEREBY FURTHER GIVEN that on April 8, 2021, by a vote of 5-1-1, the Planning Commission of the City of Newport Beach recommended that the City Council adopt the Code Amendment. All interested parties may appear and present testimony regarding this application. If you challenge this project in court, you may be limited to raising only those issues you raised at the public hearing or in written correspondence delivered to the City, at, or prior to, the public hearing. Administrative procedures for appeals are provided in the Newport Beach Municipal Code Chapter 20.64. The application may be continued to a specific future meeting date, and if such an action occurs additional public notice of the continuance will not be provided. Prior to the public hearing the agenda, staff report, and documents may be reviewed at the City Clerk's Office, 100 Civic Center Drive, Newport Beach, California, 92660 or at the City of Newport Beach website at www.newportbeachca.gov. Individuals not able to attend the meeting may contact the Planning Division or access the City's website after the meeting to review the action on this application.

SPECIAL NOTICE REGARDING COVID-19

Given the Declaration of a State Emergency and Proclamation of Local Emergency related to COVID-19, we recommend that you submit your questions and comments in writing for City Council consideration by sending them to cityclerk@newportbeachca.gov. To give the City Council adequate time to review your questions and comments, please submit your written comments by Monday, May 10, 2021, at 5:00 p.m. In addition, members of the public will have the ability to participate in this meeting telephonically. Please review the Agenda for further instructions. The Agenda, staff report and corresponding documents will be posted to the City's website at www.newportbeachca.gov, by end of business day on Friday, May 7, 2021. While the City does not expect there to be any changes to the above process for participating in this meeting, if there is a change, the City will post the information as soon as possible to the City's website. The City of Newport Beach thanks you in advance for continuing to take precautions to prevent the spread of the COVID-19 virus. If you are unable to participate in the meeting via the process set forth in the agenda, please contact the City Clerk at 949-644-3005 or cityclerk@newportbeachca.gov and our staff will attempt to accommodate you. For questions regarding details of the project please contact Joselyn Perez, Assistant Planner at 949-644-3312 or jperez@newportbeachca.gov.

Project File No.: PA2020-316 Activity No.: CA2020-009

Location: The Mixed Use-Dover/Westcliff (MU-DW) Zoning District is comprised of six parcels located along the western side of Dover Drive between 16th Street and Westcliff Drive. Applicant: City of Newport Beach

/s/ Leliani I. Brown, MMC, City Clerk, City of Newport Beach

HIGH SCHOOL ROUNDUP

Fountain Valley girls' tennis wins first league title since 1991

The Fountain Valley High School girls' tennis team beat Laguna Beach 14-4 at home on Thursday, clinching the outright Wave League title.

It's the first league title for the Barons since 1991, coach Harshul Patel said.

Patel, in his 12th year coaching at Fountain Valley, said his first league championship was sweet. The Barons nearly won the Sun-set League in 2016, but finished second after losing their last two matches to Newport Harbor and Los Alamitos.

"It's been a long journey for me and our team," Patel said in a text message.

The Barons (13-4, 5-1 in league) swept in doubles against second-place Laguna Beach (9-5, 4-2) in both teams' regular-season finale. The teams of Kaylee Tran and Emily Tran, Christy Chau and Paige Ngo, as well as Iris Chau and Skylar Ngo, swept all of their matches.

Tiffany Hoang and Jasmine Nguyen won twice in singles, while Sophie Vu won one singles match.

BASEBALL

Edison 9, Corona del Mar 3: Chargers senior Cade Liefer went two for three with two runs scored and one run batted in Thursday in the nonleague game at CdM.

Sophomore Zack Marker got the win after pitching three scoreless innings in relief for Edi-



Courtesy of Harshul Patel

THE FOUNTAIN VALLEY High School girls' tennis team clinched the outright Wave League title on Thursday.

son (9-7). Corona del Mar fell to 11-4.

Edison opens Surf League play at Huntington Beach on Tuesday, while CdM begins its Wave League campaign at Laguna Beach.

Huntington Beach 13, Laguna Beach 1: The Oilers' Ralph Velazquez was three for three and finished a single short of hitting for the cycle in Thursday's non-league game at Huntington

Beach High.

Velazquez hit a grand slam and a three-run double for Huntington Beach (11-5).

Laguna Beach is now 6-7.

Fountain Valley 5, Newport Harbor 3: Keith Aguilar had a pair of hits and three runs batted in for the Barons in Thursday's nonleague game at Fountain Valley High.

Blake Wentz earned the win for Fountain Valley (11-5), allowing

two earned runs in four innings. Wentz also was two for four with a double.

Kaden Stowell was two for four with an RBI for Newport Harbor (8-6).

BOYS' BASKETBALL

Costa Mesa 60, Orange 53: Gio Quero had 19 points, seven rebounds and seven assists for the Mustangs in Thursday's Orange Coast League road win.

Blake Wolf had 12 points and eight rebounds for Costa Mesa (6-7, 3-1 in league).

GIRLS' BASKETBALL

Newport Harbor 58, Edison 43: Chase Dionio filled the stat sheet with 25 points, seven steals, four rebounds and three assists to lead the visiting Sailors on Thursday in a Wave League game.

Willa Rath also had eight points, 13 rebounds and four blocked shots for Newport Harbor (7-2, 2-0). Emma Fuels added six points, seven rebounds, four assists, three steals and two blocks.

Edison dropped to 5-5 overall and 1-1 in league.

Corona del Mar 53, Los Alamitos 43: Makena Tomlinson had a game-high 28 points for the Sea Kings on Thursday in a Surf League game on the road.

Trasara Alexander added 12 points, and Dorothy Schwenck also had seven points for CdM (10-4, 2-0).

Kayli Liew scored 25 points for Los Alamitos (5-4, 0-2).

Estancia 43, Santa Ana 41: Lizeth Fuentes paced the Eagles with 12 points on Thursday in an Orange Coast League game at Estancia High School.

Alejandra Meza also had 10 points, and Adriela Sandoval pulled down 16 rebounds.

Estancia (3-7, 2-2) will travel to take on Calvary Chapel in its next game on Tuesday.

— From staff reports

TRESTLE

Continued from page A1

"If we had to go out and hire an engineer to design the new bridge, we couldn't afford it. And if we had to hire a construction coordinator, that would be

cost prohibitive as well," Castignetti said. "So, it's all going to have to be done with volunteer labor."

Built in 1991, the Hank Hornsveld Trestle has been a main feature on free model train rides that have been offered at Fairview since O.C. Model

Engineers incorporated in 1985 under a use agreement with the city. Whenever two trains cross there, engineers blow their horns, to the delight of parents and children alike.

Hornsveld, founder of Costa Mesa's Hank's Electrical Supply, played an

integral role in building the model railroad at Fairview Park. He reportedly constructed the bridge with lumber acquired from a city building project, after it had been determined not to meet the project's specifications, and immediately went to work.

Although the lumber was originally intended for interior use, the mighty trestle outlasted five presidential administrations, reliably conveying engines weighing more than 1,000 pounds and loaded up with as many as 25 human passengers.

"It shouldn't have lasted all that time, but it did — through the rain, the wind and the termites," Castignetti said. "It's a testament to [Hornsveld's] tenacity and his ability to build things."

But even the most well-built structures eventually succumb to the elements. Last year, after an analysis of the trestle found serious damage to timbers near its concrete base, members closed that segment of the track to the public.

Gary Gorman, immediate past president of OCME, moved to Arizona last year but plans to return to Costa Mesa monthly to manage the construction project. He said while the bridge wasn't likely to collapse, its condition had become a concern.

"After 30 years, the weather had taken its toll on the wood, which was supposed to be used indoors, and the bugs had



Kevin Chang | Staff Photographer

THE ORANGE COUNTY Model Engineers group is raising \$25,000 to replace and repair the Hank Hornsveld Memorial Trestle through a GoFundMe campaign.

eaten it," he said. "The club erred on the side of being very conservative and said, 'Let's be safe.'"

Soon after, as city facilities closed during the pandemic, O.C. Model Engineers hit the brakes on all public rides. Only now are members resuming weekend birthday party bookings and looking forward to eventually resuming the public rides.

The current lull is the perfect time to begin work on the trestle. But rebuilding a structure on the 208-acre Fairview site is a tricky proposition, even for the most careful of hands, thanks to Measure AA, passed by Costa Mesa voters in 2016.

The law says any construction of playgrounds, athletic fields or other permanent structures at the site must be put to a citywide vote.

So, the train club plans to rebuild the trestle by hand, one section at a time, while keeping the original concrete foundation intact. The careful approach is estimated to take from nine months to one year to complete.

Members say it will be worth the effort to upgrade the integrity of the structure, a main attraction on the train rides, which entertain nearly 40,000 visitors in a typical year.

"The trestle is just a huge feature of the railroad," Gorman said, emphasizing the importance of sparking kids' interest in railroading at a young age.

"Our club is wide open to youngsters," he added. "That's hopefully what will keep it going."

sara.cardine@latimes.com
Twitter: @SaraCardine

Keep up with L.A. Times, wherever you are.

As a print subscriber, you have free unlimited digital access on our app.

Our easy-to-use digital design allows you to find what you're looking for quickly. Download the app and never miss a thing.

- Stay informed 24/7 with award-winning journalism.
- Experience our upgraded app.
- Get access to the eNewspaper with easy navigation, searchable archives and offline reading.
- Easily manage your account and subscription.

Download the L.A. Times app



Access today's top stories.

Navigate the newspaper with searchable archives and offline reading.

Listen to our podcasts and watch exclusive video content.

View your recently read and saved stories.



The state of what's next. **Los Angeles Times**

TOWN

Continued from page A2

The pay ranges from \$14.58 per hour for a lifeguard up to a high of \$16.79 per hour for experienced

senior guards.

The part-time, flexible shifts are during morning, afternoon and evening hours and are ideal for high school and college students.

Qualified candidates who

are not yet lifeguard certified can become so once they are hired through an American Red Cross certificate program.

For more information visit costamesaca.gov.

— From staff reports

CROSSWORD AND SUDOKU ANSWERS

F	O	N	D	S	L	O	P	C	H	A	P
L	O	A	U	S	P	E	A	R	L	A	C
O	U	A	T	E	T	A	N	T	I	D	O
P	H	I	A	P	R	N	E	W	E	S	T
O	A	T	H	S	T	A	N				
R	I	N	S	E	W	I	L	S	O	N	
A	S	W	A	N	L	O	A	N	S	V	O
G	A	I	N	B	E	I	N	G	F	E	T
S	A	D	A	I	S	L	E	R	R	E	D
C	E	A	S	E	S	S	C	O	L	D	S
			G	I	N		G	I	Z	M	O
A	F	G	H	A	N		U	S	E	O	F
G	L	E	A	N	I	N	G	S	M	A	K
E	A	T	S	A	B	U	T	A	G	E	N
S	P	A	T	L	A	Y	S	O	D	D	S

3	8	6	9	1	2	5	7	4			
1	5	7	4	6	8	3	2	9			
9	4	2	7	5	3	6	1	8			
4	6	5	3	7	9	1	8	2			
7	3	8	6	2	1	9	4	5			
2	9	1	5	8	4	7	6	3			
8	1	3	2	9	7	4	5	6			
5	2	4	1	3	6	8	9	7			
6	7	9	8	4	5	2	3	1			